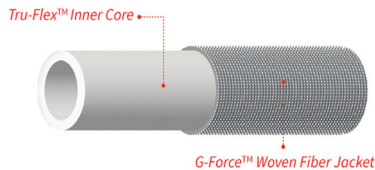


Plumbing / Hose / Pumps / Sanitation

GARDEN TYPE HOSES • HANDI-HOSE • COILED HOSE WITH NOZZLE

TEKNORAPEX



Teknor Apex Zero-G Hose

Up to 40% lighter than commercial vinyl hose.
Jobsite tough - abrasion, leak and puncture resistant.
Kink-free, easy to maneuver and store.
Does not retract or expand.
Engineered high density G-Force woven fibers for durability.
High-burst, high-flow rated.
600+ psi burst rated

Order No	Mfg No	Size	List
387553	4001-50	5/8" x 50' Black	\$57.99
387564	4001-100	5/8" x 100' Gray	\$94.99
387575	4300-75	3/4" x 75'	\$109.99



Big Boss XHose Pro

- Super strong Webbing
- New built-in stabilizer collar.
- Brass fittings.
- Kink Resistant.

Order No	Mfg No	Size	List
222591	1255	25'	\$33.63
222608	1256	50'	\$47.38
222625	1257	75'	\$61.13
222642	1258	100'	\$74.88



Gilmour

Gilmour 8-Ply Flexogen Hose

- 8-ply construction - 500 PSI burst strength
- Double tire cord reinforced for strength
- Lightweight, coils and handles easily
- Flow Guard Plus™ protective collar on 5/8" and 1/2" hoses resists kinks at faucet
- Heavy-duty, crush resistant, Full-Flo® machined metal couplings on 1", 3/4", 5/8" with built-in washer for tight sealing.
- Kink resistance
- Polished surface resists abrasions, stains, and mildew

Order No	Mfg No	Size	List
233001	9844-50	3/4" x 50'	\$53.90
233465	9844-75	3/4" x 75'	\$84.99
233479	9844-100	3/4" x 100'	\$98.90

TEKNORAPEX



Teknor Apex NeverKink Hose - Extra Heavy Duty Series 3000

- All weather flexible to 45° F.
- Microshield antimicrobial protection guards against mold and mildew.
- Ergo grip collar assures easy, kink free connection.
- White with blue stripe.

Order No	Mfg No	Size	List
387499	8602-25	5/8" x 25'	\$21.99
387503	8602-50	5/8" x 50'	\$42.99
387514	8602-75	5/8" x 75'	\$56.99
387525	8642-100	5/8" x 100'	\$78.99



TEKNORAPEX

Teknor Apex NexFlex Hose

- Up to 20% lighter than heavy duty vinyl hoses.
- Custom formulation to make it easy to handle and maneuver.
- Extra reinforcement provides anti-kink technology.
- High visibility color prevents tripping.
- 400 psi burst rated.
- Flexible and easy to maneuver in cold weather down to 35°.
- Consistent, high flow equal to a conventional 5/8" hose.

Order No	Mfg No	Size	List
387597	8100-50	5/8" x 50'	\$59.99
387586	8100-100	5/8" x 100'	\$109.99



Rain Wave Aqua Nozzle

- Salt water marine nozzle.
- Spray adjustable knob.
- Locking clip for continuous spray.

Order No	Mfg No	List
233049	RW-9420C	\$8.99

WHITECAP™



Whitecap Coiled Hose with Nozzle

Order No	Mfg No	Color	Length	List
351231	P-0440	White	15'	\$29.10
351243	P-0440B	Blue	15'	\$29.10
351252	P-0441	White	25'	\$33.23
351264	P-0441B	Blue	25'	\$33.23
351275	P-0442	White	50'	\$42.18
351286	P-0442B	Blue	50'	\$42.18

claber



Claber Jet Stream Nozzle

Guaranteed to last a minimum of one year.
Stainless steel spring, swivel head, quick release hose attachment, locking trigger, built-in check valve, 3/4" GHT inlet port and protected water channel.

Order No	Mfg No	List
130223	8967	\$11.99

GARDENA



Gardena Adjustable Trigger Nozzle with Flow Control Including Quick Connect with WaterStop

- Ideal for cleaning, mist setting for gentle watering.
- Trigger lock for continuous spray.
- Continuously adjustable water flow control
- Quick Connect with Waterstop for easy snap-on/Snap-off convenience.

Order No	Mfg No	List
400144	8117	\$14.50



Rain Wave 7 Pattern AquaNozzle

- 7-Pattern AquaNozzle
- Durable, lightweight construction

Order No	Mfg No	List
232950	RW-9101	\$6.75



Rain Wave AquaNozzle

- Fully insulated for hot or cold water use
- Solid brass stem and spray adjustment knob for long product life

Order No	Mfg No	List
200044	RW-9493C	\$9.30

PENTAIR

SHURFLO™

Shur Flo High Pressure Blaster Nozzle

High grade seals and stainless steel spring. Non-corrosive and high impact construction. Fully adjustable spray from mist to full stream for wash down or other uses. Lock clip for continuous water flow. Comfortable handle.

Order No	Mfg No	List
328102	94-010-00	\$14.41



BULLS EYE



Bulls Eye Hose Nozzle

3/4" GHT (garden hose thread) Nozzle
Manufactured & Assembled in the USA.
Solid Brass & Stainless Steel Components.
Revolutionary 'leakproof' closure.
Pin-point accuracy even under low water pressure.
50% MORE Water Pressure than 'ANY' 3/4" GHT nozzle in the WORLD.
Patent Pending.

Order No	Mfg No	List
222116	RW-PJN-17	\$12.99

Plumbing / Hose / Pumps / Sanitation

HOSE NOZZLES • HOSE MENDERS



Rain Wave Polymer Twist Nozzle

- Lightweight yet heavy duty.
- Adjustable from mist to jet stream.
- Flow control.

Order No	Mfg No	List
232951	RW-N1540	\$3.10

Rain Wave Firemans' AquaNozzle

- Large Turret Firefighter Style Aqua-Nozzle
- Heavy Duty Construction with Rubberized Covering
- Spray Adjusts from Cone to Stream 9.48" x 7" x 2.1"



Order No	Mfg No	List
233481	RW-9FN2	\$13.53

Rainwave Polymer Nozzle

Hand trigger locking clip.
Fixed water pressure nut.



Order No	Mfg No	Type	List
232954	RW-9419C	Medium	\$2.50
232952	RW-9420C	Large	\$5.63

Rain Wave Double Hose Shut-Off "Y" Connector

Non-corrosive high impact polymer with twin shut-off valves. Cap type valve handles resist breakage. Longer legs at less angle reduce hose kinking. Full ball and retainer rings reduce leakage, even at low pressure. Not recommended for hot water usage.



Order No	Mfg No	List
200043	RW-PS15	\$4.30



Rain Wave Full flow Poly Hose Accessories

Order No	Mfg No	Type	List
233492	RW-9391HF	On-Off Valve	\$6.33
233503	RW-9314HF	2-Way Y Manifold	\$8.75



Gardena Twin-Tap Connector

The two outlets are fully adjustable, independently of each other. The GARDENA Twin-Tap Connector is suitable for taps with 3/4" GHT.

Order No	Mfg No	List
400108	36938	\$25.98



JabscO Quick Release Connector with 3/4" GHT Adapter

Quick Release Features:

- Exposed surface UV stabilized.
- Provides easy connection of washdown hoses.
- Standard 3/4" male GHT hose connection.
- Self termination and sealing.
- No shut-off needed.

Mount Features:

- Easy to install.
- Stainless steel deck plate.
- 1/2" BSP (British Standard Pipe) Female inlet.
- Minimal mounting surface required.

Order No	Mfg No	List
280979	31911-0000	\$147.25



JabscO Washdown Quick Connect Kit

Fits JabscO 31911-0000 Deck Fitting above.

Built-in check valves in hose fittings prevent leaking when disconnected.

No need to turn off the water pressure to install a hose. Hose side is threaded with 3/4" male GHT.

Order No	Mfg No	List
120118	31911-0002	\$41.58



Gardena Accessory Adapter

Connects devices with female thread to the Original Gardena System.

Order No	Mfg No	Only
400109	36001	\$4.95



Gardena Tap Connector

Connects devices with male thread to the Original Gardena System.

Order No	Mfg No	List
400110	36002	\$5.95



Gardena Quick Connect Coupler

With the use of this Quick Connect Coupler, a hose can be easily extended.

Order No	Mfg No	List
400111	32931	\$7.03



Gardena Hose Mender

Hoses can be quickly and easily repaired without tools. The damaged hose part is simply cut out and the GARDENA Hose Repairer is inserted on the spot in question.

Order No	Mfg No	Size	List
400113	36933	3/4"	\$9.28



Gardena Faucet Hose Connector

used for adapting a female threaded hose coupling to the Gardena Tap Connector.

Order No	Mfg No	List
400114	36917	\$4.98



Gardena Hose Connector Water Stop

Fits on male end of hose and allows other fittings to be attached. Water stops when no other fitting is connected, flows freely when other fitting is connected.

Order No	Mfg No	List
400115	36918	\$6.95



Gardena Hose End Connector

Repair connector for the faucet end of the hose. Cut off the damaged brass coupling and slide repair connector onto the hose. The garden hose can be easily connected to the tap.

Order No	Mfg No	Size	List
400119	36826	5/8"	\$6.78
400118	34916	3/4"	\$8.55



Gardena Repair Connector - Water Stop 5/8" Accessory End

Repair Connector with automatic water stop action for the accessory end of the hose.

Cut off the damaged brass coupling and slide Repair Connector onto the hose. Ready to use!

Order No	Mfg No	List
400112	34914	\$7.03



Rain Wave Hose Washers

Order No	Mfg No	Type	List
232979	RN-9200C	Vinyl (10/Pkg.)	\$1.15
232980	RW-9202S	Rubber (10/Pkg.)	\$1.40
232981	RW-9225S	Filter Washers (3/Pdg.)	\$2.10

Plumbing / Hose / Pumps / Sanitation

GARDEN TYPE HOSE ACCESSORIES



Gardena Quick-Connector Starter Kit

Includes: Tap Connector, Female Hose End Connector, Male Hose End Connector, 2 Accessory Adaptors.

Order No	Mfg No	List
400803	36004	\$14.50



Gardena Hose Connector with Control Valve

Allows changing devices even when water pressure is high. Control valve is secured at the house outlet so you can conveniently adjust and switch off the water flow in order to change connecting devices thereby saving steps to the faucet. Suitable for 3/4" and 58" hoses.

Order No	Mfg No	List
400120	32943	\$29.15

Rain Wave Shut-Off Valve

Single shut off valve controls water flow for one hose.

Full ball and retainer rings reduce leakage, even at low pressure. Easy swivel connector assures accurate connection to faucet.

Order No	Mfg No	Only
232978	RW-PS91	\$2.35

Rain Wave Hose Threaded End Cap

Heavy duty polymer design. Includes washer.

Order No	Mfg No	List
232982	RW-940	\$2.05



RW-902MC
RW-901MC

RW-92MMC
7/16-9/16" Male

RW-92FMC
RW-91FMC

Rain Wave Hose Menders

Premium nylon construction. For repairing plastic or rubber hose. Leakproof. Reusable. Rustproof stainless steel screws. Made in U.S.A.

Order No	Mfg No	Size	List
232955	RW-902MC	5/8-3/4" Coupling	\$2.75
232956	RW-92MMC	5/8-3/4" Male	\$1.75
232957	RW-92FMC	5/8-3/4" Female	\$1.98
232958	RW-901MC	7/16-9/16" Coupling	\$2.75
232959	RW-91MMC	7/16-9/16" Male	\$1.85
232960	RW-91FMC	7/16-9/16" Female	\$2.15



RW-962Z3/4



RW-964Z1/2
RW-964Z3/4
7FHS7FH



RW-960Z1/2
7MH7MP5P
RW-959ZMB

Rain Wave Hose Couplers

Order No	Mfg No	Size	List
232962	RW-962Z3/4	Thread size 3/4" NPT-M x 3/4" NH-F	\$6.05
232964	RW-960Z1/2	Thread size 3/4" Male NH x 1/2" Male NPT	\$6.05
232965	7MH7MP5P	Thread size 3/4" Male NH x 3/4" Male NPT	\$6.05
232966	RW-959ZMB	Thread size 3/4" Male NH x 3/4" Male NH	\$6.05
232967	RW-964Z1/2	Thread size 1/2" Female NPT x 3/4" NH	\$6.05
232968	RW-964Z3/4	Thread size 3/4" Female NPT x 3/4" NH	\$6.05
232971	7FHS7FH	Thread size 3/4" Female NH x 3/4" Female NH	\$6.05



RW-N502



RW-N041



RW-N505



RW-N10C



RW-N042



RW-N02QC

Rain Wave Poly Quick Couplers

Quickly change from faucet to hose and to hose end attachments. Built-in flow water control interchangeable with most European style couplers.

Order No	Mfg No	Type	List
232972	RW-N502	Coupler Set Hose w/Shut-Off Valve	\$5.40
232973	RW-N041	Male Hose to Male Quick Connect (2)	\$1.68
232974	RW-N505	Female Quick Connect to Female Hose Coupler w/Shut-Off	\$4.43
232975	RW-N10C	Faucet Coupler Set	\$4.30
232976	RW-N042	Female Hose to Quick Connect Set (2)	\$1.98
232977	RW-N02QC	Complete Set	\$8.75



Faucet Extension / Kink Protector

Prevents hose kinks at the faucet. Helps prolong the life of your hose. Allows hose to bend at sharp angles and maintain even water flow.

Order No	Mfg No	List
233384	RW-9290KF	\$10.55



RW-9AMC



RW-9A4FC



RW-9A11QC

Rain Wave Quick Connectors

Heavy-duty solid brass construction for long life. Allows the most water flow of any quick connector system. Easily attaches to nozzle for quick connection to hose.

Order No	Mfg No	Type	List
200045	RW-9AMC	Aluminum Male	\$5.95
200046	RW-9A4FC	Female	\$10.63
200047	RW-9A11QC	Both	\$14.90



Garden Hose Hanger

Made of plastic. Holds up to a 50' hose.

Order No	Mfg No	List
220237	HH150	\$6.98



International Dock Products Aluminum Hose Holder

Made of Almag 35. Holds up to a 50' hose.

Order No	Mfg No	Item	List
231673	HHNATSMML	Natural aluminum ready for paint.	\$46.60
231796	HHWSML	White Powder Coated	\$58.70



Continental Hose Strap

- Sturdy One Piece Construction
- Adjustable strap holds a variety of garden hose lengths.
- "Hang-up" hole works great for storing in shed or garage.

Order No	Mfg No	List
221625	CHS-7	\$4.60

Plumbing / Hose / Pumps / Sanitation

SANITATION HOSE • WATER FILL HOSE • BILGE HOSE • HOSE CUFFS



Trident Sani Shield Sanitation Hose

Premium rubber sanitation hose designed specifically for the most critical toilet and holding tank connections. Tough wire reinforced construction. Specially compounded to give maximum resistance to odor permeation and toilet chemicals. Black w/green stripe. Sold by the foot.

Order No	Mfg No	Color	I.D.	O.D.	Burst Pressure	Length	List/Ft.
115019	101-1004	Black	1"	1.42"	80 lbs.	12.5'	\$12.36
115036	101-1124	Black	1-1/2"	2"	60 lbs.	12.5'	\$15.82
300025	102-1006	White	1"	1.53"	80 lbs.	50'	\$15.32
300038	102-1126	White	1-1/2"	2"	60 lbs.	50'	\$19.34



Trident Odor Shield Sanitation Hose

Extra odor-resistant sanitation hose for all head and holding tank connections. This smooth, light gray hose has a special thermoplastic formulation that exceeds the odor resistance of our popular 148 series. The hard PVC helix gives the same good flexibility and bend radius. No cuffs required. Not for potable water applications, or for exposure to alcohol, petrochemicals or solvents. Self-draining installations are necessary for longest odor free service. Sold by the foot.

Order No	Mfg No	Size	Roll Size	List/Ft.
235201	140-1006	1"	50'	\$6.75
235212	140-1126	1-1/2"	50'	\$8.01



Trident VAC H.D. Sanitation Hose - FDA Approved

Extra heavy duty sanitation hose of smooth white vinyl. Specially compounded to provide resistance to odor permeation and (FDA) potable water fill. Also for critical bilge, drain scupper, live well, etc. Hard PVC helix gives good flexibility and bend radius. No cuffs required. Do not use with alcohols, anti freeze, petro-chemicals or solvents. Self draining installations are necessary for odor free service. Operating temperatures +10° to 140° F. Sold by the foot.

Order No	Mfg No	I.D.	Roll Size	List/Ft.
115295	148-0586	5/8"	50'	\$3.42
115296	148-0346	3/4"	50'	\$3.84
115297	148-1006	1"	50'	\$4.45
115230	148-1186	1-1/8"	50'	\$5.08
115298	148-1146	1-1/4"	50'	\$5.89
115233	148-1126	1-1/2"	50'	\$6.30



Trident Extra Heavy Duty PVC Air Conditioning Hose

Smooth white cover reinforced with polyester for chiller and drain lines. Suited for use in air conditioning systems. Sold by the foot.

Order No	Mfg No	I.D.	Roll Size	List/Ft.
302506	169-0580	5/8"	100'	\$2.56



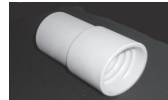
Trident VAC HD Water Fill and General Purpose Hose

Corrugated heavy wall vinyl hose with smooth tube. Low permeation & FDA (white only) compounds for potable water fill, holding tank pump out, bilge, drain, scupper lines and live well use. Hard PVC helix gives exceptional flexibility & bend radius. NOT RECOMMENDED FOR BELOW WATERLINE THRU-HULL CONNECTIONS. No cuffs required but may use #143 RHT cuffs. Operating temperatures +10° to +140°F. 50' roll. Sold by the foot.

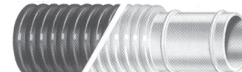
Order No	Mfg No	I.D.	List/Ft.
235112	146-1126	1-1/2"	\$5.17

Threaded Hose Cuff (Right hand threads)

Provides added clamping protection for VAC hose. For wa-tertight seal apply with sealing compound. White.



Order No	Mfg No	I.D.	List
235100	143-1120	1-1/2"	\$6.80



Trident Bilge Hose

Extremely flexible and tough corrugated polyethylene hose for bilge intake and discharge. Cuffed every foot for clamping. Resists oily bilge and sea water. NOT RECOMMENDED FOR BELOW WATERLINE THRU-HULL CONNECTIONS. Operating temp. -40° to +200° F. Black color. Sold by the foot.

Order No	Mfg No	I.D.	Length	List/Ft.
115202	121-0346	3/4"	50'	\$1.32
115203	121-1186	1-1/8"	50'	\$1.55
115204	121-1126	1-1/2"	50'	\$2.54



Trident VAC - H.D. Bilge & Live Well Vinyl Hose

Heavy duty bilge, drain and live well hose. Clear vinly (see thru) corrugated with black hard PVC helix and smooth tube. Provides exceptional flexibility and bend radius. NOT RECOMMENDED FOR BELOW WATERLINE THRU-HULL CONNECTIONS. No cuffs required. Sold by the foot.

Order No	Mfg No	Size	Roll Size	List/Ft.
299823	144-0586	5/8"	50'	\$2.74
299834	144-0346	3/4"	50'	\$2.83
299845	144-1186	1-1/8"	50'	\$3.60
299856	144-1146	1-1/4"	50'	\$3.87
299867	144-1126	1-1/2"	50'	\$4.45



Trident Clear PVC Tubing

Non-toxic FDA compounded PVC for many unpressurized, cool water uses like fresh water, drain and vent lines. Operating temperatures +20° to +150° F. NOT RECOMMENDED FOR BELOW WATERLINE THRU-HULL CONNECTIONS. Sold by the foot.

Order No	Mfg No	I.D.	Roll Size	List/Ft.
233226	150-0146	1/4"	50'	\$1.14
233227	150-0386	3/8"	50'	\$0.96
115236	150-0126	1/2"	50'	\$1.44
115237	150-0586	5/8"	50'	\$1.92
115238	150-0346	3/4"	50'	\$2.45
115240	150-1006	1"	50'	\$3.28
115241	150-1186	1-1/8"	50'	\$4.94



Trident Wire Reinforced Clear PVC Tubing

Strong. Very flexible and smooth non-toxic, transparent plasticized PVC. Shock resistant galvanized steel spiral.

Applications:

• Full vacuum lines, • Industrial vacuum pumps, • Food and beverage dispensing, • Air and water supply lines, • Coolant lines, • Liquid suction lines, Sold by the foot.

Order No	Mfg No	Size	Roll Size	List/Ft.
299879	163-0126	1/2"	50'	\$4.33
299889	163-0586	5/8"	50'	\$4.15
299892	163-0346	3/4"	50'	\$5.81
299903	163-1006	1"	50'	\$7.39
299909	163-1146	1-1/4"	50'	\$15.21
299912	163-1126	1-1/2"	50'	\$17.94

Plumbing / Hose / Pumps / Sanitation

A/C DUCT HOSE • REINFORCED PVC TUBING • FUEL LINE & FILL HOSE • FUEL LINE HOSE

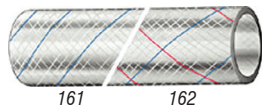


Trident VAC XHD Bilge & Live Well Hose - #147

Smooth extra heavy duty wall vinyl hose. 147 is all clear (FDA) with black helix. Excellent durability, flexibility and bend radius for XHD bilge, live well, drain, scupper lines, etc. No cuffs required. Operating temperatures: +10 to +140 degrees F. CA prop 65 compliant.

Sold by the foot.

Order No	Mfg No	I.D.	Roll Size	List/Ft.
302628	147-0586	5/8"	50'	\$3.06
302632	147-0346	3/4"	50'	\$3.19
302643	147-1006	1"	50'	\$3.87
302654	147-1146	1-1/4"	50'	\$4.95
302665	147-1126	1-1/2"	50'	\$5.98



Trident Reinforced PVC - FDA Approved

Nylon reinforced. FDA compounded PVC for pressurized drinking water systems, etc. No taste or odor. Max water pressure depending on I.D. size @ 70° F: 175 PSI. NOT RECOMMENDED FOR BELOW WATERLINE THRU-HULL CONNECTIONS.

Sold by the foot.

Order No	Mfg No	I.D.	Roll Size	List/Ft.
232282	161-0146	1/4"	50'	\$1.14
115248	162-0386	3/8"	50'	\$1.36
115243	162-0120	1/2"	250'	\$1.44
115244	162-0580	5/8"	250'	\$2.00
115245	162-0340	3/4"	250'	\$2.72
115246	162-1000	1"	250'	\$4.00
115255	161-1146	1-1/4"	50'	\$7.17
115294	161-1126	1-1/2"	50'	\$9.11

Full Rolls

Order No	Mfg No	I.D.	Roll Size	List/Roll
115249	162-0126	1/2"	50'	\$80.84
115250	162-0586	5/8"	50'	\$109.28
115252	162-0346	3/4"	50'	\$146.40
115253	162-1006	1"	50'	\$211.96



Trident A2 Corrugated Fuel Fill Hose

USCG - ISO - SAE - NMMA - Lloyds - CE
Lloyd's registry approved. Exceeds ABYC H-24 & H-33, SAE J1527, ISO 7840 & USCG Type A2; and is NMMA Type accepted & CE certified. Built with thick wall, corrugated cover, smooth tube and wire helix between 2 ply reinforcement for extra bendability and service life. Formulated for max. resistance to fire, heat, cold, ozone, aging, and permeation by all fuels including alcohol blends. Perfect for diesel fuel tank transfer hose. Five year manufacturer's warranty. Sold by the foot.

Order No	Mfg No	Size	Length	List/Ft.
235234	329-1124	1-1/2"	12.5'	\$26.14



Trident A2 Fuel Line and Fill Hose

Built with thick wall, smooth cover and tube, wire helix between 2 ply reinforcement for extra service life and bendability. Formulated for maximum resistance to fire, heat, cold, ozone, aging, permeation by all marine fuels including alcohol blends. Lloyd's Registry Type Approved Cert. 02/00030. exceeds ABYC H-24, H-33, SAE J1527, ISO 7840 and USCG type A2 and is NMMA type accepted and CE certified. Five year manufacturer's warranty. Sold by the foot.

Order No	Mfg No	Size	Length	List
115090	327-1124	1-1/2"	12.5'	\$205.32/Length
131253	327-1126	1-1/2"	50'	\$16.42/Foot
115092	327-1784	1-7/8"	12.5'	\$26.37/Foot
115078	327-2004	2"	12.5'	\$27.90/Foot



Trident Marine B1-15 EPA Compliant O/B Fuel Line

Trident Barrier Lined B1-15 Fuel Hose for both gasoline (including ethanol blends up to E85) and diesel (including bio diesel blends up to 100%). The #305 series exceeds ABYC H-24, SAE J1527, ISO 8469 B1, USCG Type B1-15; CARB & EPA low permeation Type B1-15 requirements; and is NMMA Type Accepted & CE certified. This hose is built with the best fuel and age resistant formulation and a unique "Barrier Liner" on inside surface of the tube, so fuel is not in direct contact with rubber. Provides extraordinary resistance to fuel permeation, aging, and also to heat, cold, and the ozone. Also provides excellent bendability. Three year manufacturer's warranty. Sold by the foot.

Order No	Mfg No	Size	Length/Roll	List/Ft.
299914	305-0147	1/4"	100'	\$3.65
299925	305-0567	5/16"	100'	\$3.65
299936	305-0387	3/8"	100'	\$3.88



Trident A1 Fuel Line

USCG - ISO - SAE - NMMA - ABYC - CE
Barrier lined fuel hose (distribution, return, vent and transfer) for both gasoline and diesel (including alcohol blends). Exceeds ABYC H-24 & H-33, SAE J1527, ISO 7840 & USCG Type A1; and is NMMA type accepted and CE certified. Built with best fuel, fire and age resistant formulation. 2 spiral reinforcement and unique "Barrier Liner" on inside surface of tube so fuel is not in direct contact with rubber. Provides extraordinary resistance to fuel permeation and aging, as well as fire, heat, cold and ozone. Also has good bendability. Five year manufacturer's warranty. Sold by the foot.

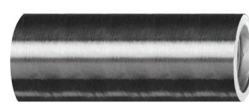
Order No	Mfg No	Size	Roll Size	List/Ft.
131250	365-0146	1/4"	50'	\$4.10
115265	365-0566	5/16"	50'	\$4.41
115266	365-0386	3/8"	50'	\$4.50
233229	365-0126	1/2"	50'	\$5.79
233228	365-0586	5/8"	50'	\$6.46



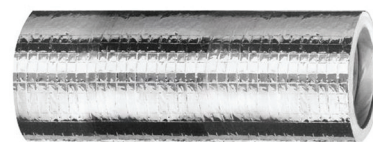
Sierra Vinyl Fuel Tubing

Universal fuel line. 10' lengths. Sold in 10' packages.

Order No	Mfg No	Size	Roll Size	List
120607	18-8150	1/8"	10'	\$39.50
120608	18-8151	3/16"	10'	\$62.23
120609	18-8152	1/4"	10'	\$57.50



470



471

Trident Insulated Air Conditioning Duct

Thermo-efficient insulated Heating & A/C Duct. Black CPE Core (bonded to coated wire helix) easily expands over fittings & supports thick blanket of fiberglass insulation. #471 has fiberglass reinforced metalized cover. Rated R-42. Operating temperatures (-29°C to +121°C). Meets UL 181, NFPA 90A and 90B. 25' lengths; sold by the foot.

Order No	Mfg No	Size	Color	List/Ft.
302676	470-3000	3"	Black	\$5.24
302687	471-4000	4"	Silver	\$5.72
302698	471-5000	5"	Silver	\$6.60
302709	471-6000	6"	Silver	\$6.96

Plumbing / Hose / Pumps / Sanitation

MULTIPURPOSE MARINE HOSE • WATER/HEATER HOSE • VERY HIGH-TEMP EXHAUST HOSE



Trident Ply Marine Ocean-Flex Multipurpose Marine Hose

Suitable for Fuel fill - Fuel Feed - Fuel Vent - Lube Oil - Wet Exhaust - Water - Bilge - Coolant - Sanitation - Drain

Unique marine hose can be used for a multitude of applications for both Commercial and Recreational Vessels including: Fuel Fill, Feed, and Vent (Diesel & Gasoline 0 Type A1), Lube Oil, Wet Exhaust, Water (Vital and Non Vital), Bilge Coolant, Drains, and Sanitation applications.

Provides excellent resistance to fuel, fire, heat, cold, ozone and aging.

Also provides exceptional bend-ability and adheres to more standards than any other marine hose.

Required on certain commercial vessels.

Specifications:

Tube: Black Nitrile

Cover: Black Nitrile

Reinforcement: Multiple Textile Spirals, Dual Steel Wire Helix

Temperature range: -20° F to 212° F (-29° C to 100° C)

Lengths: 12.5 ft. Sold by the foot.

Order No	Mfg No	I.D.	Length	List/Ft.
300049	321-0124	1/2"	12.5'	\$18.05
300051	321-0584	5/8"	12.5'	\$18.14
300062	321-0344	3/4"	12.5'	\$18.74
300073	321-0784	7/8"	12.5'	\$19.53
300084	321-1004	1"	12.5'	\$19.63
300095	321-1184	1-1/8"	12.5'	\$20.57
300106	321-1144	1-1/4"	12.5'	\$21.04
300113	321-1384	1-3/8"	12.5'	\$23.25
300128	321-1124	1-1/2"	12.5'	\$23.28
300139	321-1344	1-3/4"	12.5'	\$26.71
300141	321-2004	2"	12.5'	\$28.60
300152	321-2124	2-1/2"	12.5'	\$39.28
300163	321-3004	3"	12.5'	\$44.89
300174	321-4004	4"	12.5'	\$58.18



Trident Water/Heater Hose

Excellent for engine heater hose, heat exchanger, air conditioner circulation. Also good for sink, icebox, shower and live well drains. Heavy duty, can be used for toilet intake.

Good bend radius. Resistant to mild chemicals, heat, cold, ozone and saltwater. Temperature range -40° to +190° F. 50 ft. rolls. Sold by the foot.

Order No	Mfg No	I.D.	Length/Roll	List/Ft.
233230	130-0126	1/2"	50'	\$2.84



Trident Corrugated Wet Exhaust Hose (SAE J2006)

Corrugated wet exhaust hose for longer bent connections with substantial bends. Thick tube and cover with wire helix between 2 ply reinforcement. Exceptional flexibility and bend radius. Resists heat, ozone, exhaust fumes, panting and collapse. Exceeds (SAE J2006-R2, and ABYC and NMMA P-1 exhaust standards.) New Lloyd's Registry Type approved Cert. 02/00029. Black High Temp EDPM Rubber 250° Max. 12-1/2' lengths. Five year manufacturer's warranty.

Order No	Mfg No	Size	Length	List/Per Foot
115301	252-1124	1-1/2"	12.5'	\$22.21
115303	252-2004	2"	12.5'	\$27.58
115305	252-2124	2-1/2"	12.5'	\$35.53
115307	252-3004	3"	12.5'	\$40.81



Trident Ply Marine Wet Exhaust & Water Hose Without Wire

For short, straight connections. In smaller I.D.s for critical engine coolant and circulation, heat exchanger and discharge uses. Extra heavy tube and cover with 2 to 6 ply reinforcement resists heat, aging, ozone, exhaust and sanitation chemicals. Exceeds SAE 12006-R1), and ABYC & NMMA P-1 exhaust standards). New Lloyd's registry type approved Cert. 02/00029. Black high temp EDPM rubber 250°F. max.

12-1/2' Lengths. Five year manufacturer's warranty. Sold by the foot.

Order No	Mfg No	I.D.	Length	List/Ft.
115282	110-0124	1/2"	12.5'	\$7.40
115283	110-0584	5/8"	12.5'	\$8.42
115023	110-0344	3/4"	12.5'	\$9.53
115284	110-0784	7/8"	12.5'	\$10.64
115025	110-1004	1"	12.5'	\$11.10
115285	110-1184	1-1/8"	12.5'	\$11.70
115027	110-1144	1-1/4"	12.5'	\$13.32
115287	110-1384	1-3/8"	12.5'	\$15.27
115030	200-1124	1-1/2"	12.5'	\$16.01
233225	200-1584	1-5/8"	12.5'	\$16.28
115289	200-1344	1-3/4"	12.5'	\$17.58
115043	200-1784	1-7/8"	12.5'	\$18.92
115044	200-2004	2"	12.5'	\$20.36
233224	200-2144	2-1/4"	12.5'	\$23.13
233223	200-2384	2-3/8"	12.5'	\$25.08
115048	200-2124	2-1/2"	12.5'	\$27.81
233222	200-2784	2-7/8"	12.5'	\$32.16
115051	200-3004	3"	12.5'	\$33.03
115053	200-3124	3-1/2"	12.5'	\$36.97
115055	200-4004	4"	12.5'	\$40.39
115058	200-5004	5"	12.5'	\$61.72
115061	200-6004	6"	12.5'	\$75.60
115063	200-8004	8"	12.5'	\$113.54
115064	200-10004	10"	12.5'	\$157.82
115065	200-12004*	12"	12.5'	\$240.22

* Special order only.



Trident Very Hi-Temp Exhaust Water Hose 202V Blue Silicone Rubber

Very Hi-Temp Silicone Rubber Exhaust Hose - 350° Max. Multi-ply polyester reinforced. Heavy wall. Sold in 3' lengths.

Order No	Mfg No	I.D.	Length	List
291012	202V1000-36	1"	3'	\$75.56
291013	202V1140-36	1-1/4"	3'	\$89.38
291015	202V1120-36	1-1/2"	3'	\$94.69
291016	202V2000-36	2"	3'	\$103.07
291022	202V3000-36	3"	3'	\$156.87
291027	202V4000-36	4"	3'	\$200.07
291038	202V6000-36	6"	3'	\$307.42
291049	202V8000	8"	3'	\$493.33

Trident #202X Red Xtra Hi Temp Hose (Special Order)

#202X Red Xtra Hi Temp [4 ply Nomex® reinforcement 500°F (260°C)] dramatically exceeds all standards and lasts up to 6 times longer than black rubber. Special Order Only.

Like Us On Facebook

954-463-4307 • D.S. Hull Company Inc. • www.dshullco.com

Plumbing / Hose / Pumps / Sanitation

EXHAUST HOSE • HI-TEMP HOSE • HI-TEMP ELBOWS & BELLOWS

Trident 250/100 Series Flex Marine Wet Exhaust & Water Hose with Wire

Marine wet exhaust hose for longer bent connections. In smaller I.D.'s for engine intake, critical water, drain, scupper bilge & sanitation uses. Extra heavy tube and cover with wire helix between 2 ply reinforcement provides excellent flexibility and bend radius. Resists heat, ozone, exhaust, sani chemicals, painting and collapse. Exceeds (SAE J2006-R2, and ABYC & NMMA P-1 exhaust standards). Black high temp EPDM Rubber 250°F Max.. Five year manufacturer's warranty. Sold by the foot or 12-1/2' length.



Trident Hi-Temp Exhaust Elbows

Molded Black Hi Temp: EPDM Rubber 250°F (121°C).
Hose clamps not included, order separately.

Order No	Mfg No	I.D.	Length	List/Ft.
115001	100-0124	1/2"	12.5'	\$10.27
115002	100-1584	5/8"	12.5'	\$10.73
115003	100-0344	3/4"	12.5'	\$146.32
233248	100-0346	3/4"	50'	\$11.70
115004	100-1784	7/8"	12.5'	\$12.17
115005	100-1004	1"	12.5'	\$159.04
233255	100-1006	1"	50'	\$12.72
115006	100-1184	1-1/8"	12.5'	\$13.70
115007	100-1144	1-1/4"	12.5'	\$180.44
233262	100-1146	1-1/4"	50'	\$14.44
115009	100-1384	1-3/8"	12.5'	\$15.96
115066	250-1124	1-1/2"	12.5'	\$195.48
233273	250-1126	1-1/2"	50'	\$15.64
115067	250-1584	1-5/8"	12.5'	\$16.94
115068	250-1344	1-3/4"	12.5'	\$18.00
115069	250-1784	1-7/8"	12.5'	\$18.55
115070	250-2004	2"	12.5'	\$256.20
131252	250-2006	2"	50'	\$20.50
115071	250-2144	2-1/4"	12.5'	\$23.09
115073	250-2384	2-3/8"	12.5'	\$25.12
115074	250-2124	2-1/2"	12.5'	\$28.73
115075	250-2784	2-7/8"	12.5'	\$36.23
115077	250-3004	3"	12.5'	\$35.02



Trident Blue Cora-Sil

Marine Exhaust & Water Hose

This hose offers the best performance and flexibility. Silicone naturally handles higher temperatures and lasts longer than rubber exhaust hose. The silicone will also transfer less heat into the engine room. Meets and exceeds Marine Exhaust Standards, SAE J2006, ISO 13363 and is Loyds Register Certified. 10 year warranty. Tube and cover wire reinforced corrugated silicone. Reinforced by wire helix and 2-ply polyester. Temperature range: 350° F. Sold in 3' lengths.

Order No	Mfg No	Size	Color	List
302517	252V0340-36	3/4" X 3'	Blue	\$92.96
302528	252V0780-36	7/8" X 3'	Blue	\$101.78
302539	252V1000-36	1" X 3'	Blue	\$102.87
302540	252V1140-36	1-1/4" X 3'	Blue	\$116.31
302551	252V1120-36	1-1/2" X 3'	Blue	\$127.67
302562	252V1340-36	1-3/4" X 3'	Blue	\$161.13
302573	252V2000-36	2" X 3'	Blue	\$168.87
302584	252V2120-36	2-1/2" X 3'	Blue	\$190.22
302586	252V3000-36	3" X 3'	Blue	\$233.42
302597	252v4000-36	4" x 3'	Blue	\$278.31
302608	252v5000-36	5" x 3'	Blue	\$452.40
302621	252V6000-36	6" X 3"	Blue	\$666.73



Trident Hi-Temp Reducing Bellows Humps

Molded Black Hi Temp: EPDM Rubber 250°F (121°C).

Order No	Mfg No	Size	Color	List
290568	THHR-353	3" X 3.5"	Black	\$23.00
290579	THHR-54	5" X 4"	Black	\$26.29
290580	THHR-65	6" X 5"	Black	\$30.22
290591	THHR-86	8" X 6"	Black	\$113.04
290600	THHR-108	10" X 8"	Black	\$150.51



Trident Hi-Temp Exhaust Bellows Humps

All flexible products meet and exceed new marine exhaust standards: SAE J2006, ABYC P1, NMMA boat certification.

Black: High Temp. 100% EPDM Rubber; -40° to +250° F; 5 year manufacturer's limited warranty.

No textile or wire reinforcements. Designed for wet exhaust systems only. Hose clamps not included, order separately.

Order No	Mfg No	Size	Color	List
290502	THH-3	3"	Black	\$18.47
290513	THH-35	3-1/2"	Black	\$19.71
290524	THH-4	4"	Black	\$20.36
290535	THH-5	5"	Black	\$27.60
290546	THH-6	6"	Black	\$33.51
290557	THH-8	8"	Black	\$128.82
290561	THH-10	10"	Black	\$151.82

Plumbing / Hose / Pumps / Sanitation

VERY HI-TEMP ELBOWS • EXHAUST BELLOWS HUMPS • FIBERGLASS EXHAUST TUBE • EXHAUST FLAPPERS • HOSE CLAMPS



Trident Very Hi-Temp Exhaust Bellows Single Hump

All flexible products meet and exceed new marine exhaust standards: SAE J2006, ABYC P1, NMMA boat certification.
Blue: Very Hi-Temp: Blue Silicone Rubber; -65° F to +350° Max. Continuous; 10 year limited manufacturer's warranty.
No textile or wire reinforcements. Designed for wet exhaust systems only.
Hose clamps not included, order separately.

Order No	Mfg No	Size	Color	List
290602	272V2000	2"	Blue	\$45.47
290614	272V2120	2-1/2"	Blue	\$56.36
290625	272V3000	3"	Blue	\$58.53
290636	272V3120	3-1/2"	Blue	\$67.62
290647	272V4000	4"	Blue	\$90.18
290658	272V5000	5"	Blue	\$107.09
290669	272V6000	6"	Blue	\$131.47
290670	272V8000	8"	Blue	\$247.69



Trident Very Hi-Temp (up to 350° F) 2 Hump Bellows

Blue: Very High Temp: Blue Silicone Rubber; -65° F to +350° Max. Continuous; 10 year limited manufacturer's warrant.

Order No	Mfg No	Size	List
290681	274V6000	6"	\$383.58
290692	274V8000	8"	\$423.33
290703	274V10000	10"	\$519.53



Trident Blue Very Hi-Temp (up to 350° F) Exhaust Elbows

Blue: Very Hi-Temp: Blue Silicone Rubber; -65° F to +350° Max. Continuous; 10 year limited manufacturer's warrant. Hose clamps not included, order separately.

Order No	Mfg No	Size	Bend	Color	List
290961	290V2000	2"	90°	Blue	\$60.73
290972	290V3000	3"	90°	Blue	\$94.27
290983	290V4000	4"	90°	Blue	\$106.62
290994	290V5000	5"	90°	Blue	\$129.04
291005	290V6000	6"	90°	Blue	\$151.11
291009	290V8000	8"	90°	Blue	\$280.00
291010	290V10000	10"	90°	Blue	\$1117.29
290938	240V4000	4"	45°	Blue	\$95.91
290949	240V5000	5"	45°	Blue	\$113.84
290950	240V6000	6"	45°	Blue	\$121.44
290952	240V8000	8"	45°	Blue	\$191.33
290954	240V10000	10"	45°	Blue	\$840.53



Trident Exhaust Tubing Connectors (Fiberglass)

For all flexible rubber exhaust components. UL listed and ABS Type approved. 250° F. maximum.

Order No	Mfg No	Size	Length	List
290715	260-2001	2"	4"	\$15.24
290726	260-2121	2.5"	4"	\$15.36
290737	260-3001	3"	4"	\$15.44
290748	260-3121	3.5"	4"	\$16.42
290759	260-4001	4"	6"	\$25.98
290760	260-5001	5"	6"	\$35.09
290771	260-6001	6"	6"	\$43.76
290782	260-8001	8"	8"	\$95.53

Exhaust Flappers

Includes stainless steel clamp. Sold individually.



Order No	Mfg No	Size	List
287332	18-4456	3"	\$32.44
287333	18-4457	4"	\$33.32
287334	18-4458	5" & 6"	\$62.80



Flexible Clamp Drivers

Has hexagon socket and flexible shaft Flexible shaft allows grip on clamps up to 90°. Easy-grip handle is made of high impact plastic.

Order No	Mfg No	Size	List
121962	9999V	2 in 1 Socket ; Fits 1/4" & 5/16" (6.35mm or 7.94mm; 10-7/8" Long	\$28.99
110213	60002	For ABA & AWAB Clamps 7 mm x 10" Long	\$41.30



Scandvik 250 Piece ABA Hose Clamp Suitcase

Brief case style carrying case with 250 assorted ABA stainless steel hose clamps and 1 flexible nut driver.
Dimensions: 18-1/2" L x 12-15/16" W x 3-1/4" H.
Weight: 17 lbs.

Order No	Mfg No	List
122258	31605	\$1327.00



Scandvik 56 Piece ABA Hose Clamp Cruiser Pack

Clear plastic case with 56 assorted ABA stainless steel hose clamps and 1 flexible nut driver.

Order No	Mfg No	List
122269	31606	\$360.00

Plumbing / Hose / Pumps / Sanitation

HOSE CLAMPS

Like Us On
facebook

954-463-4307 • D.S. Hull Company, Inc. • www.dshullco.com



Scandvik 5/16" Mini Clamp Tail Sleeves

Protects hands from cuts and scratches caused by hose clamp tails. Slides onto the bare end of the tail. 25 per pack.

Order No	Mfg No	List
121978	31601P	\$13.00



1/2" Hose Clamp Tail Pieces

Fits AWAB clamps and any other clamps with 1/2" band.

Order No	Mfg No	Quantity	List
121966	31611P	25	\$13.25



Constant Torque Stainless Steel Clamps

All Stainless Steel 5/8" (16mm) wide band, liner, housing, screw and Bellville Springs. 7/8" (22mm) OD Range. Automatically expands and contracts to compensate for heat & cold. Sold individually.



Order No	Mfg No	Hose I.D.	Size	List
299604	730-2000	1-7/8" - 2"	2.25" - 3.125"	\$20.40
299615	730-2120	2-3/8" - 3"	2.75" - 3.625"	\$20.55
299626	730-3000	2-3/4" - 3-1/4"	3.25" - 4.125"	\$20.79
299637	730-3120	3-1/4" - 3-1/2"	3.75" - 4.625"	\$20.97
299648	730-4000	4"	4.25" - 5.125"	\$21.39
299659	730-4120	4-1/8" - 4-1/2"	4.75" - 5.625"	\$21.99
299660	730-6000	6"	6.25" - 7.125"	\$22.71
299671	730-8000	8"	7.25" - 8.125"	\$24.36
299682	730-10000	10"	10.35" - 11.25"	\$27.09
299693	730-12000	12"	12.35" - 13.225"	\$28.95
299704	730-14000	14"	14.35" - 15.225"	\$25.20



Stainless Steel T-Bolt Exhaust Clamps

3/4" wide, 316 stainless steel band and 18-8 stainless steel T-bolt and lock nut (with nylon insert). Very strong and secure for critical applications. Sold individually.

Order No	Mfg No	Hose I.D.	Hose O.D.	List
115308	720-1000	1"	1.28" - 1.59"	\$18.88
235167	720-1140	1-1/8" - 1-1/4"	1.53" - 1.84"	\$18.92
115309	720-1120	1-3/8" - 1-1/2"	1.78" - 2.09"	\$18.96
235178	720-1340	1-5/8" - 1-3/4"	2.03" - 2.34"	\$19.12
115310	720-2000	1-7/8" - 2"	2.28" - 2.59"	\$19.32
235189	720-2140	2-1/8" - 2-1/4"	2.53" - 2.84"	\$19.44
115095	720-2120	2-3/8" - 2-1/2"	2.78" - 3.09"	\$19.60
235190	720-2340	2-5/8" - 2-3/4"	3.03" - 3.34"	\$19.96
115096	720-3000L	2-7/8" - 3-1/4"	3.37" - 3.94"	\$20.80
115311	720-3120L	3-1/2"	3.87" - 4.44"	\$21.24
115097	720-4000L	4"	4.37" - 4.94"	\$21.84
115313	720-4120L	4-1/2"	4.87" - 5.44"	\$22.84
115098	720-5000L	5"	5.37" - 5.94"	\$23.28
115314	720-5120L	5-1/2"	5.87" - 6.44"	\$23.44
115099	720-6000L	6"	6.53" - 7.10"	\$23.76
115100	720-8000L	8"	8.62" - 9.19"	\$25.12
115101	720-10000L	10"	10.43" - 11.00"	\$27.00
115102	720-12000L	12"	12.75" - 13.32"	\$30.08



Scandvik ABA 304 Stainless Steel Mini Hose Clamps

Made of cold rolled strip stainless steel to Swedish Standard SS1265. Band and screw are 304 stainless steel to withstand corrosive marine environment.

Nut is retained in the lug even when screw is removed.

Hexagonal screw head may be tightened with ABA flexible driver.

Hex screw head: 7mm (9/32"); Band width: 9 mm (3/8").



Order No	Mfg No	Size	Min.	Max.	List
121902	22008	8mm	.30"	.34"	\$2.25
121913	22009	9mm	.34"	.37"	\$2.25
121924	22010	10mm	.37"	.43"	\$2.26
121935	22011	11mm	.41"	.47"	\$2.39
121947	22012	12mm	.45"	.51"	\$2.41



Scandvik ABA 316 Stainless Steel Hose Clamps

Acid Resistance

No perforations in the band.

Rolled up band edges to minimize hose wear.

Vibration proof 6° thread pitch.

Hex head worm screw 7mm (9/32") across flats.

Bandwidth: Size 3, 4, 6 are 3/8"; all others are 1/2".



Order No	Mfg No	SAE	Min.	Max.	List
120031	13014	3	5/16"	9/16"	\$4.20
110192	13017	4	7/16"	11/16"	\$4.20
110193	13020	6	1/2"	13/16"	\$4.42
110194	13024	8	5/8"	1"	\$4.64
110195	13028	10	3/4"	1-1/8"	\$4.90
110196	13032	12	7/8"	1-1/4"	\$4.90
110197	13038	16	1-1/16"	1-1/2"	\$5.12
110198	13044	20	1-1/4"	1-3/4"	\$5.27
110199	13050	24	1-1/2"	2"	\$5.50
110226	66057	28	1-1/4"	2-1/4"	\$5.50
110200	66064	32	1-1/2"	2-1/2"	\$6.06
110220	66070	36	1-3/4"	2-3/4"	\$6.24
110201	66076	40	2"	3"	\$6.46
121838	66083	44	2-1/4"	3-1/4"	\$6.83
110202	66089	48	2-1/2"	3-1/2"	\$7.06
110203	66095	52	2-3/4"	3-3/4"	\$7.20
121847	66102	56	3"	4"	\$7.70
121856	66108	60	3-1/4"	4-1/4"	\$8.47
110204	66114	64	3-1/2"	4-1/2"	\$9.07
121864	66127	72	3-1/2"	5"	\$9.56
110205	66140	80	4"	5-1/2"	\$9.80
121873	66152	88	4-1/2"	6"	\$11.03
110206	66165	96	5"	6-1/2"	\$11.42
110207	66178	104	5-1/2"	7"	\$12.32
121882	66191	112	6"	7-1/2"	\$13.11
110208	66203	120	6-1/2"	8"	\$13.21
121891	66216	128	7"	8-1/2"	\$13.99
110209	66232	138	7-5/8"	9-1/8"	\$14.18
110210	66257	154	8-5/8"	10-1/8"	\$15.31
110211	66283	170	9-5/8"	11-1/8"	\$16.27
110212	66308	186	10-5/8"	12-1/8"	\$16.83

Plumbing / Hose / Pumps / Sanitation

HOSE CLAMPS • WATER PRESSURE REGULATORS



Ideal Pow'r Gear 60 Series High Performance Stainless Steel Worm Gear Hose Clamps

The premier clamp in the industry.
Designed for high vibration and stubborn leakage applications.
Extra wide 5/8" band. Pow'r Gear clamps deliver over 800 lbs of band tension at 150 in. lbs of screw torque.
Screw: 5/16" hex-head.
Band: 5/8" wide. .027 in. thick.
304 grade stainless steel.
Housing and saddle: 5/8" wide. .060 in. thick. 304 grade stainless steel.



Order No	Mfg No	Min.	Max.	Sold By	List
104364	6260451	1/4" (Mini-clamp)	5/8"	Each	\$1.62
104365	6260651	5/16" (Mini-clamp)	7/8"	Each	\$1.67
104385	6030051	2.25"	3.12"	Each	\$7.60
104386	6035051	2.75"	3.62"	Each	\$7.76
104399	6040051	3.25"	4.12"	Each	\$8.00
104388	6045051	3.75"	4.62"	Each	\$8.20
104389	6050051	4.25"	5.12"	Each	\$8.44
104390	6055051	4.75"	5.62"	Each	\$9.04
104391	6060051	5.25"	6.12"	Each	\$9.28
104392	6065051	5.75"	6.62"	Each	\$9.40
104393	6070051	6.25"	7.12"	Each	\$9.72
104394	6075051	6.75"	7.62"	Each	\$10.52
104395	6080051	7.25"	8.12"	Each	\$10.72
104396	6085051	7.75"	8.62"	Each	\$10.92
104397	6090051	8.25"	9.12"	Each	\$11.16



Ideal Hy-Gear Stainless Steel Hose Clamps

Marine grade clamp for boating applications and other corrosive environments. High nickel alloy 300 grade stainless steel..
Screw: 5/16" hex-head.
Band and housing: 9/16" wide.
Sold individually.



Order No	Mfg No	SAE	Min.	Max.	List
104366	63004008051	8	7/16"	1"	\$2.39
104367	630040010051	10	1/2"	1-1/16"	\$2.43
104368	630040012051	12	1/2"	1-1/4"	\$2.43
104369	630040016051	16	3/4"	1-1/2"	\$2.52
104370	630040020051	20	3/4"	1-3/4"	\$2.66
104371	630040024051	24	1"	2"	\$2.75
104372	630040028051	28	1-5/16"	2-1/4"	\$2.79
104373	630040032051	32	1-9/16"	2-1/2"	\$2.88
104374	630040036051	36	7/8"	2-3/4"	\$2.97
104375	630040040051	40	1-1/8"	3"	\$3.33
104376	630040044051	44	1-5/16"	3-1/4"	\$3.60
104377	630040048051	48	1-5/8"	3-1/2"	\$3.92
104378	630040052051	52	1-7/8"	3-3/4"	\$4.01
104379	630040056051	56	2-1/8"	4"	\$4.14
104407	630040060051	60	2-1/4"	4-1/4"	\$4.46
104380	630040064051	64	2-5/8"	4-1/2"	\$4.46
104381	630040072051	72	3-1/8"	5"	\$4.86
104382	630040080051	80	3-5/8"	5-1/2"	\$5.27



Camco Water Pressure Regulator

Protects plumbing and hoses. Factory pre-set at 40-50 psi. 3/4" pipe size.

Order No	Mfg No	List
222321	40143	\$12.99



SHURFLO®



Shurflo Regulated City Water Entry

Plastic. An exclusive diaphragm design prevents high-pressure damage often caused by city water systems. Leak-tight, stress and crack-resistant, these high-performance water entries limit water pressure safely to 65 PSI [3.4 Bar] while meeting or surpassing all check valve code requirements. 1-Year Warranty.

Order No	Mfg No	Finish	List
232181	183-029-14	Chrome	\$56.71
328330	183-029-18	White	\$51.14



a xylem brand

Chrome Plastic Flush

White Plastic Flush

In-line



Jabco PAR Water Pressure Regulator

Protects boat water system appliances and pumps from damaging pressures of unregulated marina water hookups. Reduce high water pressures. Built-in backflow preventer. Easy to install. Easy to clean in-line filter.

Order No	Mfg No	Pressure PSI	Description	Inlet	Outlet	List
241156	44412-1045	35-100 psi	White Plastic Flush	3/4" GHT	1/2" NPT	\$52.38
241158	44412-2045	35-100 psi	Chrome Plastic Flush	3/4" GHT	1/2" NPT	\$68.13
183136	44411-0045	46-125 psi	White Plastic In-line	3/4" GHT	3/4" GHT	\$52.88
183147	44411-1045	46-125 psi	White Plastic flush	3/4" GHT	3/4" GHT	\$59.30