

Hardware

LIFTING HANDLES • STERN HANDLES • LID LIFTS

PERKO®
Made in the USA

Perko Flush Ring Pull
Chrome plated zinc.



Order No	Mfg No	O.D.	List
340427	1232DP1CHR	1-5/8"	\$17.25
340434	1232DP2CHR	2"	\$20.10

WHITECAP™

Whitecap Flush Lift or Pull

Stainless steel. For opening hatches. 1.5" x 1".
Predrilled for four #8 fasteners.



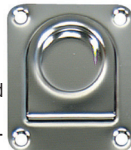
Order No	Mfg No	List
240054	6022C	\$20.05

WHITECAP™

Whitecap Lifting Handle

Excellent for most hatches, cabinets, and drawers.

Extremely corrosion-resistant marine stainless steel. Takes #8 flat head fasteners. Dimensions: 2-1/4" x 2-5/8".



Order No	Mfg No	List
240107	S-222C	\$11.15

PERKO®
Made in the USA

Perko Flush Ring Pull

Chrome plated bronze. Face plate dimensions: 2-9/16" x 2". Screw size: #8.



Order No	Mfg No	List
730132	1103DPOCHR	\$52.43

PERKO®
Made in the USA

Perko Flush Ring Pull

Chrome plated zinc.
Face plate dimensions: 1-3/4" x 1-3/8".
Screw size: #6.



Order No	Mfg No	List
703082	0841DPOCHR	\$18.20

PERKO®
Made in the USA

Perko Flush Ring Catch

Chrome plated zinc. Phosphor bronze spring. Overall dimensions: 2-1/4" x 1-3/8".
Screw size: #6.



Order No	Mfg No	List
703203	1051DPOCHR	\$30.68



TH Marine Lid Lifts

· Injection molded poly.
· Bottom cup prevents water from entering box.



Order No	Mfg No	Color	Size	List
302001	LL-1-DP	Black	2-3/4" x 2-3/4"	\$5.76

PERKO®
Made in the USA

Perko Flush Lifting Handle

Chrome plated brass.

Screw size: #8.

Note: 776DP2 has all four screw holes in corners.



Order No	Mfg No	Dimensions	List
703022	0776DP1CHR	3" x 2-1/4"	\$72.30
703023	0776DP2CHR	2-3/16" x 1-3/16"	\$93.58

Chrome Plated Zinc

Order No	Mfg No	Dimensions	List
740005	1220DPOCHR	3" x 2-1/4"	\$22.75

WHITECAP™

Whitecap Lifting Handle

Strong and large enough for hatch covers. Extremely corrosion-resistant marine stainless steel. Takes #8 flat head fasteners. 2-1/4" x 3".



Order No	Mfg No	List
240108	S-223C	\$10.80

SEADOG LINE
QUALITY MARINE GEAR

SeaDog Hatch Handle/Latch

Stainless steel.

Base: 3" X 3-3/4"

Depth of latch rod: 5-5/16"



Order No	Mfg No	List
351404	221835-1	\$73.00



TH Marine Large Lid Lifts

· Large 3-finger opening.
· Convenient rectangular shape.
· Easy to install.

Size: 3-1/2" x 2-1/4"



Order No	Mfg No	Color	List
245040	LLR-1-DP	Black	\$5.64

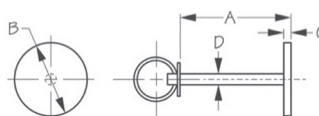
PERKO®
Made in the USA

Perko Handle

Chrome plated bronze. Length overall: 4-1/4". Length inside: 2-1/2". Height inside: 7/8". 2 per pack.



Order No	Mfg No	List
730164	0775DP1CHR	\$71.13



Sea Dog Hatch Cover Pull

Stamped 304 stainless steel.

Order No	Mfg No	A	B	C	D	List
351795	221842-1	1-5/16"	1-1/4"	1/8"	3/16"	\$7.26

PERKO®
Made in the USA

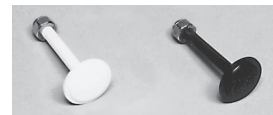
Perko Plastic Flush Pull

Black plastic. Easily installs in a 1-3/4" diameter hole.
Dimensions: 2-1/4" x 2-1/4".



Order No	Mfg No	Color	List
340446	1016DP0BLK	Black	\$4.53
713484	1016DP0WHT	White	\$4.53

MarineEast



Marine East Retractable Hatch Lift

Prevents toe stubbing or tripping. Designed with large undercut for easy handling. Stainless steel stop nut acts as a weight to retract pin. Recommended for small to medium size hatches. Composite material will not rattle. Does not absorb heat.

Order No	Mfg No	Color	List
382532	4033	Black	\$5.95
382543	4033W	White	\$5.95

WHITECAP™

Whitecap Stern Handles

Chrome plated Zamak construction. Pre drilled for four #10 screws. Can be attached to the transom to assist swimmers and divers in boarding the boat, or in the bridge near the wheel to steady the helmsman in heavy weather. Overall length: 6". Grip: 3-1/4". Sold in pairs.



Order No	Mfg No	List
240176	S-1462	\$26.40



6-1/2" Stainless Steel Utility Handle

Overall length: 6-1/2"

Base Width: 1-3/4"

Fasteners: (4) #8 SS Self Tapping included.

Order No	Mfg No	List
233356	N349-001	\$10.50



Hardware

CHOCKS • HANDLES • CLEATS

Like Us On
facebook

954-463-4307 • D.S. Hull Company, Inc. • www.dshullco.com

PERKO®
Made in the USA



Perko Skene Bow Chocks

Chrome plated zinc alloy. Max. rope size: 1/2". Length overall: 3-1/4". Width: 7/8". Screw size: #8. Sold in pairs.

Order No	Mfg No	List
703323	1223DPOCHR	\$14.78

WHITECAP™



Whitecap Skene Bow Chocks

Stainless steel construction. Sold in pairs.

Order No	Mfg No	Size	Line Size	List
240001	6113C	4-1/2"	1/2"	\$44.85
240002	6073C	6"	3/4"	\$99.45

WHITECAP™



Whitecap Bow Chocks

Stainless steel construction. Sold in pairs.

Order No	Mfg No	Length	Line Size	List
240003	6013C	4-1/2"	1/2"	\$56.45
240004	6030C	6"	3/4"	\$81.03

WHITECAP™



Whitecap Straight Bow Chocks

Stainless steel construction. Sold in pairs.

Order No	Mfg No	Length	Line Size	List
240005	6082C	5"	5/8"	\$57.63
240006	6083C	6"	3/4"	\$59.15



Ready-Cleat

Portable instant cleat that is used as an insert to the rod holder, when a fender is required for docking and no permanent cleat is available along the beam in the cockpit of a boat. ReadyCleat® is inserted into any standard size rod holder, up to 9.5" in depth, providing an instant fender cleat.

Order No	Mfg No	List
122144	1084	\$28.83

WHITECAP™



Whitecap Junior Cleat

Chrome plated brass. 2-1/2" long. Takes #8 fasteners. 2 per pack.

Order No	Mfg No	List
240103	S-541C	\$9.28



TH Marine Molded Nylon Cleats

Tough nylon and molded for strength and UV resistance.

Order No	Mfg No	Length	List
303075	CLEAT-4.5-DP	4-1/2"	\$4.62
303086	CLEAT-6-DP	6"	\$5.49
303097	CLEAT-8-DP	8"	\$7.77
303108	CLEAT-10-DP	10"	\$10.74

WHITECAP™

Whitecap Lifting Ring/Cleat

Stainless steel. Figures for maximum working load have been determined on the basis of the load being applied in the direction of the axis of the shank. Predrilled for 5/8" -11 bolt (not included).

Order No	Mfg No	Diameter	Length	Max. Load	List
240017	6098C	1-1/8"	6"	4000 lbs.	\$53.05
240018	6099C	1-1/2"	7"	5000 lbs.	\$116.10

WHITECAP™

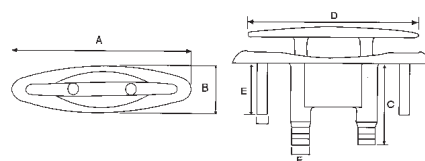


Whitecap Hollow Base Cleats

Stainless steel construction.

Order No	Mfg No	Type	Size	List
240007	6009C	Standard	6"	\$18.83
240008	6010C	Standard	8"	\$35.73
240009	6011C	Standard	10"	\$59.95
240010	6012	Standard	12"	\$84.10
240011	6110	Heavy Duty	8"	\$76.20
240012	6111	Heavy Duty	10"	\$99.50
240013	6112	Heavy Duty	12"	\$207.70
240014	6224	Heavy Duty	15"	\$267.00

WHITECAP™



Whitecap Stainless Steel E-Z Push-Up Cleats

Order No	Mfg No	A	B	C	D	E	F	List
335087	6804	5-1/4"	1-3/4"	2-15/16"	4-1/2"	1-7/16"	5/8"	\$83.85
335098	6809	7-1/4"	1-7/8"	2-7/8"	6"	1-13/16"	5/8"	\$109.60
335109	6810	9-1/4"	1-15/16"	4-1/16"	8"	2-1/2"	3/4"	\$192.88

FORESPAR®



Forespar Marelon Low Profile 6" Cleat

Hole diameter: 1/4".

Order No	Mfg No	List
334246	941006	\$8.60

WHITECAP™



Whitecap Chrome Plated Brass Yacht Cleat

Order No	Mfg No	Length	List
244126	S-970C	5-1/2"	\$22.98
244127	S-971C	6-1/2"	\$27.18
244128	S-972C	8"	\$35.00

Hardware

CLEATS • BOW EYES • STERN EYES



Whitecap Zamac Hollow Base Cleats

Chrome plated Zamac construction. This stylish contemporary cleat has all the advantages of traditional hollow base designs. Predrilled for four fasteners.

Order No	Mfg No	Length	List
240162	S-1444C	4-1/2"	\$12.00
240163	S-1445C	6"	\$14.13



S-Shape Dock Cleats

Dock cleats are cast from Almag 35 aluminum alloy producing a high strength cleat with superior weather and salt water resistance. The wide, elongated base with recessed fasteners offers greater shear resistance than any other cleat design. First developed by S. King Fulton, Inc., over twenty years ago, this cleat has established a track record for strength and durability beyond that of any other cleat in its class.

Order No	Mfg No	Size	List
231675	10CL	10"	\$24.20
231790	12CL	12"	\$33.10
231676	15CL	15"	\$47.73



Galvanized Dock Cleats

Galvanized iron solid based dock cleats. Pre-drilled for 1/4" fasteners.

Order No	Mfg No	Size	List
244012	S-1520P	6"	\$4.33
118223	S-1521P	8"	\$17.75
244077	S-1522P	10"	\$17.48
244208	S-1523	12"	\$24.53
244210	040815	15"	\$59.95
244213	040818	18"	\$84.95



Taco Multi-Purpose 15° Portable Cleat

- Fits in rod holder
- Brushed aluminum finish.
- Large S-shape 9" cleat design.
- Accommodates up to 3/4" dock line..
- Pipe diameter 1-1/2" fits into standard rod holders 1-5/8" diameter.
- Loop hole design to hand fenders over the side
- Ideal for hanging hose while washing boat.
- Packaged in mesh bag for easy drying and to avoid scratching deck or storage surfaces on the boat..
- One year limited warranty.

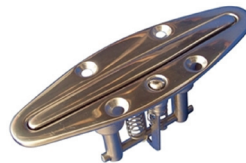
Order No	Mfg No	List
369974	F30-0861BSA-1	\$129.85



Accon Folding Cleat

- Mounts on surface of boat. No cut-outs or hole saws required.
- These cleats lock down when not needed, and spring up when release button is pushed in.
- No drain tubes or drain receptacles required. They do not leak into the boat.
- The most simple installation of any retractable cleat in the industry.
- Constructed of brightly polished marine grade 316 cast S.S..
- Stud mount (with hidden fasteners). Stud length is 1 1/2".

Order No	Mfg No	Length	List
121798	334-4	4-1/2"	\$61.05
121799	334-6-S	6"	\$79.74



Accon Pop-Up Cleats

- Cleat pops up at the touch of a button—simply push it back down when it is no longer needed and it locks in the flush position.
- In the up position, Pop-Up® Cleats function exactly like conventional cleats.
- Made of marine grade 316 stainless steel.

Order No	Mfg No	Length	List
120509	202-6	6"	\$129.32



Whitecap Stern Eye

304 Stainless steel.
Eye size: 1-1/2"
Stock: 1/2"
Thread length: 3-7/16"
Plate size: 3-1/2" x 1-1/2"

Order No	Mfg No	List
233118	S-5029P	\$24.00



Whitecap Stainless Steel Bow Eye

304 stainless steel.

Order No	Mfg No	Eye	Stock	Length of Threads	Plate	List
233117	S-5021P	1"	3/8"	3"	3/4" x 2-1/4"	\$17.43
730155	S-5022P	1"	3/8"	3-7/16"	3/4" x 2-1/4"	\$18.50
730157	S-5023P	1-1/2"	1/2"	3-7/16"	3/4" x 3"	\$29.48
730156	S-5024P	1-1/2"	1/2"	4-3/4"	3/4" x 3"	\$29.60



Over 350 brand name manufacturers
Enormous, 50,000 sq. ft. warehouse located next to Ft. Lauderdale International Airport to support all of our customers.
Special orders are no problem.
Selection second to none.
120 years combined marine experience within our sales team - we can find what you need!
Exclusive Wesmar distributor.
Hours: 7:30 a.m. - 4:30 p.m. - Monday - Friday.
Our knowledgeable & friendly staff is ready to help you.
Call Debbie Senti at 954-463-4307 ext. 313
Call Jim Haun at 954-463-4307 ext. 304
Call Lou Moran at 954-463-4307 ext. 314
Call John Carracino 954-732-9570 (Cell)
Email: johnc@dshullco.com
Call Pamela Hutchisson at 954-463-4307 ext. 322
Call Bob Leatherman at 954-463-4307 ext. 305 (Wesmar)



Ronstan U-Bolt

Stainless steel. Comes with top plate, backing plate, washers and nuts. 5/16" threaded, 1-1/8" U diameter, 1-1/2" U height.

Order No	Mfg No	List
109662	RF541	\$21.12



954-463-4307 • D.S. Hull Company, Inc. • www.dshullco.com

Hardware

DECK FILLS • CHAIN & ROPE DECK PIPES • DECK PLATE KEYS



Whitecap Hawse Pipe

316 marine stainless steel hawse pipe. Flange 5-1/2" x 2-1/2". Interior hole 1-1/2" x 3-3/4". Depth: .88". Drilled for four #10 screws.

Order No	Mfg No	List
231230	6223	\$40.28



Whitecap Hinged Rope Deck Pipe

Chrome plated brass. Cover is hinged to allow flipping back and hauling the anchor line from below deck. Inside diameter is 1-1/2".

Order No	Mfg No	List
240143	S-112C	\$36.60



Whitecap Chain & Rope Deck Pipe

Chrome Plated Brass. Ideal for retracting rope in rope wells. Keeps deck uncluttered. For up to 3/4" rope. Flange diameter is 4"; inside diameter is 1-3/4".

Order No	Mfg No	List
240144	S-113P	\$41.00



Whitecap Chain & Rope Deck Pipe

Chrome plated brass. Large oval opening allows rope splice on thimble to pass through easily. Allows chain to pass through also. Interior hook to support chain. Chrome plated brass construction. Flange dimensions are 6-1/8" x 4-3/8"; inside dimensions are 4" x 2-1/4".

Order No	Mfg No	List
240145	S-114P	\$78.10

Spare Cover & Chain

Order No	Mfg No	List
240281	S-114T	\$36.70



Perko Retaining Cable for Deck Plates

Stainless steel cable and fittings with 1-3/8" stainless steel ring and self-tapping screw.

Order No	Mfg No	List
730140	0537DP	\$8.30



Perko Deck Plate Key

Plain zinc. 1-11/16" center to center between studs. Fits 2" deck plates. Length overall: 3-3/8".

Order No	Mfg No	List
703348	1248009DP	\$6.55



Perko Deck Plate Key

Chrome plated zinc. Compact size with hole for key chain. Will fit Perko 1-1/4" and 1-1/2" deck plates and many other "slot" type opening deck plates. Center to center of lugs: 1-1/8". Spade length: 1". Overall length: 1-3/4".

Order No	Mfg No	List
340405	1247DP0BLK	\$7.83



Perko Adjustable Deck Plate Key

Chrome plated zinc. Hardened steel pins. Will fit sizes up to 8" diameter. Overall length: 8-1/2".

Order No	Mfg No	List
703064	0826DP0CHR	\$36.08



Whitecap Universal Deck Plate Key

Stainless steel. Fits almost all caps. Also features bottle opener built-in.

Order No	Mfg No	List
244121	S-7041P	\$10.18



Whitecap Deck Plate Key

Marine stainless steel. Opens deck fills.

Order No	Mfg No	List
240093	6060C	\$10.20



Groco Spanner Wrench Deck Plate Kit

Groco strainers ARG and SA have three holes in strainer cap which allow for use of a spanner wrench to tighten or loosen the cover before or after maintenance. Cast bronze with 1/4" diameter stainless steel pins on one side and 5/16" pins on the other side. Opens to fit deck plates and strainer covers with key holes up to 7" apart. Hole in the handle makes it easy to hang the wrench in a location convenient to strainer location.

Order No	Mfg No	List
380105	SW-2531	\$26.00



Parts for Perko Model 528 Deck Plates for Pipe Replacement Caps

Order No	Mfg No	Pipe Size	List
702858	0528C0799A	1-1/4"	\$93.93
702859	0528DP899A	1-1/2"	\$109.18



Replacement "O" Rings

2 per pack.

Order No	Mfg No	Pipe Size	List
130145	0513007	1-1/4"	\$7.44
130146	0513DP8	1-1/2"	\$9.45
130139	0513009	2"	\$11.37



Perko "Gas" Cap for 1270 Deck Plate

Black plastic cap with O-ring and integral retainer.

Order No	Mfg No	List
750075	1270/DPG/99A	\$22.88

Hardware

DECK FILLS • FUEL & WATER DECK PIPES • REPLACEMENT FILL CAPS

PERKO®
Made in the USA



Perko Chromalex Deck Fill

Chrome plated zinc with black plastic flange and cap. Complete with grounding screw and integral cap retainer/gasket.
Fits fill hose size: 1-1/2".
O.D. overall: 3-1/8".
Neck length: 1-7/8".

Order No	Mfg No	List
703409	1313DP0CHR	\$26.95

Spare Caps

Order No	Mfg No	Type	List
702346	0126DP0BLK	Standard	\$12.70

PERKO®
Made in the USA



Perko 1319 Straight Vented Deck Fill

Black polymer.
Integral tank vent with flame arrestor.
No deck plate key or ground wire required.
Flip top cap.

Order No	Mfg No	Marked	List
750319	1319DPGBLK	GAS	\$31.65

PERKO®
Made in the USA



Perko 0540 Angled Vented Deck Fill

Chrome plated bronze cap.
Black Polymer body.
Stainless steel bead chain.
Integral tank vent with flame arrestor and anti-surge valve.
Deck plate key included.
Angled neck.

Order No	Mfg No	Marked	List
750308	0540DPGCHR	GAS	\$63.48

PERKO®
Made in the USA



Perko Fuel System Locking Cap for 1-1/2" Non-Vented Fills

- Black Polymer with gasket.
- Built in lock cylinder.
- Size #0 fits Perko fills 1313 & 1399
- Size #1 fits Perko fills 0520, 0527, 0528, 0557, 0599 and 1270

Order No	Mfg No	List
750467	1324DP1BLK	\$43.10

FORESPAR®
MARINE PRODUCTS THAT PERFORM



Forespar Marelon Deck Fills

Clearly marked for either water, fuel or waste. Easy-open cap is fitted with nylon retainer cord and rubber 'O'-ring to ensure a safe and efficient seal. Suitable for 1-1/2". Hose barb length: 3". Deck flange is 4" diameter. Cutout: 2-1/2".

Order No	Mfg No	Marked	List
334218	907003	Water	\$29.45

WHITECAP®



Whitecap Flush Deck Fills

Solid stainless steel construction for flush mounting to deck.
Predrilled for #10 hardware.

For use with 1-1/2" NPT.

Flange outside diameter: 3-1/2"

Order No	Mfg No	Type	List
231255	6031	Gas	\$90.35
231256	6032	Diesel	\$90.35
231257	6033	Water	\$90.35
231258	6034	Waste	\$90.35

For use with 2" NPT.

Flange outside diameter: 4-1/8"

Order No	Mfg No	Type	Only
231259	6131	Gas	\$95.85
231260	6132	Diesel	\$95.85

Replacement Cap with Chain

Order No	Mfg No	NPT	Only
231263	6074C	1-1/2"	\$31.43
231264	6167	2"	\$51.25

WHITECAP®



Whitecap Hose Deck Fill with Key

316 Stainless steel. Barbed for 1-1/2" fuel fill hose. Flange O.D. 3". Requires #10 screws for installation.

Order No	Mfg No	List
377235	6123	\$44.85

Deck Fill Cap Only

Order No	Mfg No	NPT	List
377240	6061C	1-1/2"	\$22.78

WHITECAP®



Whitecap Push-Up Deck Fills

316 Stainless steel. Barbed for 1-1/2" I.D. fuel/gas fill hose. 90° angle. Cap has chain to prevent loss. Flange O.D. 3". Requires #10 screws for installation.

Order No	Mfg No	Type	List
335115	6993C	Gas	\$71.05
335137	6995C	Water	\$71.05
335148	6996C	Waste	\$71.05

Replacement Cap

Order No	Mfg No	List
335150	6961C	\$49.53

D.S. HULL
COMPANY

Over 350 brand name manufacturers
Enormous, 50,000 sq. ft. warehouse located next to
Ft. Lauderdale International Airport to support all of our
customers.

Special orders are no problem.

Selection second to none.

120 years combined marine experience within our sales
team - we can find what you need!

Exclusive Wesmar distributor.

Hours: 7:30 a.m. - 4:30 p.m. - Monday - Friday.

Our knowledgeable & friendly staff is ready to help you.

Call Debbie Senti at 954-463-4307 ext. 313

Call Jim Haun at 954-463-4307 ext. 304

Call Lou Moran at 954-463-4307 ext. 314

Call John Carracino 954-732-9570 (Cell)

Email: johnc@dshullco.com

Call Pamela Hutchisson at 954-463-4307 ext. 322

Call Bob Leatherman at 954-463-4307 ext. 305 (Wesmar)

Like Us On
facebook

954-463-4307 • **D.S. Hull Company, Inc.** • www.dshullco.com