

Electrical

ELECTRICAL BOXES & COVERS • DOCKSIDE BOXES • TEAK SWITCH & OUTLET COVERS

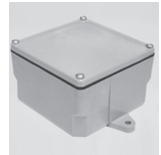
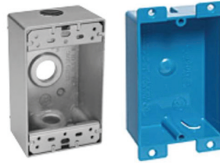
Electrical Boxes & Covers

All-Weather products are manufactured to exacting standards and meet strict UL requirements.

Outlet Boxes

Holes are 1/2" diameter. Lugs are included.

| Order No | Mfg No | Type | List |
|----------|-----------|--------------------------------|--------|
| 298813 | FSB50-3-W | Std. Depth White Painted Metal | \$5.70 |
| 220321 | 166444 | Shallow Depth Blue Plastic | \$1.39 |



PVC Junction Boxes with Lid

PVC construction with rubber gasket for watertightness.

| Order No | Mfg No | Size | List |
|----------|----------|--------------|---------|
| 222037 | 5133709U | 4" x 4" x 4" | \$18.65 |
| 222048 | 5133710U | 6" x 6" x 4" | \$25.00 |

Outlet Covers

| Order No | Mfg No | Type | List |
|----------|------------|----------|--------|
| 298874 | 1BC-W | Blank | \$1.99 |
| 298862 | 1C-GHM | G.F.C.I. | \$6.65 |
| 298825 | 1C-DH-AL-W | Duplex | \$4.99 |

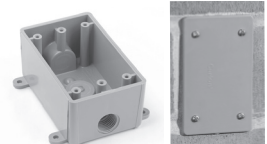


Weatherproof Electrical Boxes & Covers

Gray PVC boxes and covers designed for safe installation and operation in wet or damp locations. For use with non-metallic wiring systems.

Exterior dimensions: 4-5/8" x 2-3/4".

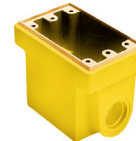
| Order No | Mfg No | Description | List |
|----------|------------|-------------------|--------|
| 235714 | E381D-CAR | Box w/3 knockouts | \$9.21 |
| 235700 | E980CN-CAR | Blank cover | \$3.60 |



Teak Switch and Outlet Covers

3-5/8" x 5-1/16". Sold in pairs.

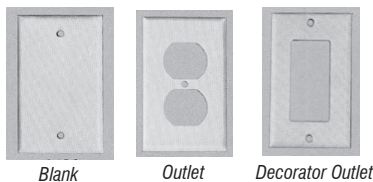
| Order No | Mfg No | Type | List |
|----------|--------|--------------|---------|
| 264064 | 60170 | Outlet | \$19.18 |
| 264065 | 60171 | Ground Fault | \$19.18 |
| 264067 | 60174 | Blank | \$13.00 |



Hubbell Dockside Boxes

Yellow fiberglass type FD (deep) weatherproof box has two molded-in knockouts. 4-9/16"H x 2-15/16"W x 3-1/4" D.

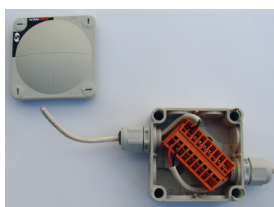
| Order No | Mfg No | Type | List |
|----------|------------|-------------|---------|
| 114153 | HBL60CM83 | W 3/4" KO's | \$44.45 |
| 114159 | HBL60CM84A | W 1" KO's | \$44.45 |



Plastic Electrical Cover Plates

"W" in Mfg. no. indicates white color; all others are ivory.

| Order No | Mfg No | Type | Color | List |
|----------|-----------|------------------|-------|--------|
| 231038 | 2129W-BOX | Blank | White | \$0.99 |
| 231041 | NP8W | Outlet | White | \$0.99 |
| 231059 | NP26W | Decorator Outlet | White | \$0.99 |



Scanstrut Waterproof Junction Box For Marine Electrical Cables

- Providing secure, watertight connections for marine electrical cables onboard any boat, they are manufactured from a glass reinforced plastic and provide capacity for up to 8 cables to enter the box.
- Cables are quickly routed into the box through an IP66 elastomeric membrane, guaranteeing protection against water ingress.
- Boxes can be fitted directly to the required mounting surface.

| Order No | Mfg No | Terminals | List |
|----------|---------|-----------|---------|
| 130657 | SB-8-10 | 10 | \$46.20 |



Hubbell Nylon Watertight Strain Relief Cord Connectors

Nylon cord connectors provide strain relief and watertight seal where cable enters equipment, panel or box.

| Order No | Mfg No | NPT Size | I.D. Range | List |
|----------|------------|----------|------------|---------|
| 114162 | HBL10CM22S | 1/2" | .250-.375" | \$11.98 |
| 114168 | HBL10CM23S | 1/2" | .375-.500" | \$11.98 |
| 114171 | HBL10CM35S | 3/4" | .375-.500" | \$13.15 |
| 114178 | HBL10CM36S | 3/4" | .500-.625" | \$13.15 |
| 114183 | HBL10CM37S | 3/4" | .625-.750" | \$13.15 |
| 114189 | HBL10CM41S | 1" | .625-.750" | \$16.98 |



Hubbell Cover Plates

Yellow polycarbonate weather-proof flip cover plate for duplex receptacles.

| Order No | Mfg No | Type | List |
|----------|-----------|-----------------|---------|
| 114078 | HBL52CM21 | Fits HBL 47CM00 | \$63.18 |
| 114079 | HBL52CM22 | Standard | \$63.18 |



954-463-4307 • D.S. Hull Company, Inc. • www.dshullico.com

Electrical

WEATHERPROOF PLATE • SWITCH PLATES • PRESSWITCH • GROUND FAULT CIRCUIT INTERRUPTER • 15 AMP 125 VOLT DEVICES

Like Us On
facebook



Hubbell Weatherproof Plate

Gray PVC weatherproof lift cover plate for GFCI receptacles. For vertical mounting in FS/FD type boxes.

| Order No | Mfg No | List |
|----------|---------|---------|
| 114192 | CWP26CR | \$43.73 |



Hubbell Weatherproof Switch Plate

Clear silicone rubber weatherproof bubble plate for use with all AC toggle switches and PressSwitches. Also ideal for use with lighted handle toggle switches. Not CSA.

| Order No | Mfg No | List |
|----------|--------|---------|
| 105148 | 1795 | \$56.50 |



Hubbell Weather Resistant Wall Plates

Curved corners. Screws pre-inserted. Individually packaged.

| Order No | Mfg No | Type | Color | List |
|----------|--------|-------------|-------|--------|
| 231066 | NP1W | Std. Switch | White | \$0.99 |



Hubbell Standard Switch

Tough thermoplastic with with ultrasonically welded cover and base. Elongated strap for better wall box mounting. UL Onlyed.

| Order No | Mfg No | Color | List |
|----------|--------|-------|--------|
| 231018 | RS115W | White | \$1.25 |



Hubbell Decorator Products Rocker Switches

Single pole, quiet rocker switches. Smooth, quiet rocker. Self-grounding feature is standard. Ultrasonically welded cover and base provides maximum strength. UL Onlyed.

| Order No | Mfg No | Color | List |
|----------|---------|-------|--------|
| 231029 | RSD115W | White | \$3.75 |



Hubbell Decorator Duplex Receptacles

Elongated strap for better wall box mounting Low profile, shallow depth. UL Onlyed. 15A / 125V

| Order No | Mfg No | Color | List |
|----------|--------|-------|--------|
| 231005 | RRD15W | White | \$2.50 |



Hubbell Duplex Receptacle

Construction and commercial series duplex receptacles Straight blade devices. 2 pole, 3 wire grounding 15 and 20 ampere, 125 volts. Heavy duty, specification grade.

| Order No | Mfg No | Color | List |
|----------|--------|-------|--------|
| 231002 | RR15W | White | \$1.75 |



Hubbell Ground Fault Circuit Interrupter

- UL Onlyed.
- Protects people, kids and pets from line to ground electrical shock.
- Test button for checking working condition.
- After tripping, easily reset by pushing face button.
- Mounts on any standard 2½" box.
- Meets ABYC and National Electric Code.

| Order No | Mfg No | Color | List |
|----------|------------|-------|---------|
| 114110 | GFRST52MW | White | \$34.38 |
| 114117 | GFRST52MI | Ivory | \$34.38 |
| 114121 | GFRST52MBR | Brown | \$34.38 |
| 114126 | GFRST52MG | Gray | \$34.38 |



Hubbell 15 Amp/125 Volt Straight Blade Connectors

Both have one-piece nylon housing that assembles easily with two screws. Built-in cord grips have range of .22-.66 in.

| Order No | Mfg No | Description | List |
|----------|------------|-------------|---------|
| 114486 | HBL52CM69V | Connector | \$30.00 |
| 114497 | HBL52CM66V | Plug | \$13.75 |



Heavy Duty 3-Way Outlet Adapter

| Order No | Mfg No | List |
|----------|--------|--------|
| 231071 | 3794 | \$5.40 |

ProMariner
Advanced On-Board Chargers



ProMariner Universal AC Plug Holder

No cutting, stripping or splicing wires. Secure your AC plug with an easy-mount receptacle.

| Order No | Mfg No | Color | List |
|----------|--------|-------|---------|
| 186134 | 51200 | White | \$16.00 |
| 186145 | 51201 | Black | \$16.00 |



4700CR

MARINCO



4721CR



4731CR

Marinco 15 Amp 125 Volt Devices – Locking Type

| Order No | Mfg No | Type | List |
|----------|--------|-------------------|----------|
| 278849 | 4700CR | Duplex Receptacle | \$117.15 |
| 278854 | 4721CR | Plug | \$27.65 |
| 278867 | 4731CR | Connector | \$46.05 |



Legrande 15 Amp 125 Volt Plugs and Connectors Straight Blade Devices

Rated for 15 Amp, 125 VAC usage. Back wire holes have tapered lead-in and clamps are spring loaded open for easy wiring. Solid brass plug blades firmly embedded into the body.

| Order No | Mfg No | Type | List |
|----------|--------|--------|---------|
| 231070 | 5266 | Male | \$10.50 |
| 231069 | 5269 | Female | \$17.50 |



Hubbell 20 Amp/125 Volt Connectors

2 pole, 3 wire twist lock male connector. Yellow Insulgrip connector body has rugged nylon housing and detachable cord grip (with range of .385-.785") that utilizes a unique offset jaws arrangement to provide secure strain relief.

| Order No | Mfg No | List |
|----------|-----------|---------|
| 114097 | HBL23CM11 | \$34.13 |

954-463-4307 • D.S. Hull Company, Inc. • www.dshullco.com

Electrical

125 VOLT 30 AMP SHORE POWER DEVICES



Hubbell 30 Amp 125 Volt Boat Inlets

Chrome plated brass shore power inlet has thermoset interior for heat resistance. Interior is shielded from the elements by a gasketed, self-closing cover. Watertight when the cover is screwed in place. Mounting holes are 2-3/8" on centers and rear portion has a 2.093" diameter. Mounting screws and gasket are included.

| Order No | Mfg No | List |
|----------|----------|----------|
| 114030 | HBL303SS | \$168.50 |



Replacement Interior

| Order No | Mfg No | List |
|----------|-----------|---------|
| 114033 | HBL303INT | \$60.45 |



30 Amp 125 Volt Yellow Locking Receptacle

Yellow single receptacle has heat resistant melamine body and abuse resistant nylon face.

| Order No | Mfg No | Type | List |
|----------|-----------|------|---------|
| 114092 | HBL305CRR | Std. | \$34.48 |
| 114031 | HBL26CM10 | H.D. | \$57.93 |



Hubbell 30 Amp 125 Volt Lift Cover Plate

Yellow polycarbonate spring-loaded lift cover plate for weatherproofing receptacle #26CM10A. Meets the most stringent requirements of UL's Ongoing categories for weatherproof plates. Stainless steel screws and neoprene gaskets included for mounting to FS/FD type weatherproof boxes.

| Order No | Mfg No | List |
|----------|--------------|---------|
| 114032 | HBL74CM25WOA | \$72.43 |



Hubbell Nylon 30 Amp 125 Volt Inlet

Stylized UV resistant non-metallic shore power inlet has a white centrex cover which makes this unit weatherproof when completely closed. Interior is heat resistant thermoset material and has threaded post terminals for ease of wiring with crimp terminals. Mounting holes are 2-3/8" on centers and match existing mounting patterns. Mounting screws and gasket are included.

| Order No | Mfg No | List |
|----------|----------|---------|
| 114100 | HBL303NM | \$90.25 |



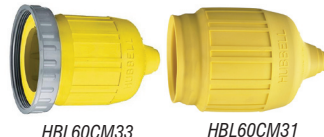
HBL26CM13

HBL26CM11

Hubbell 30 Amp Cable Ends

2 pole, 3 wire ship to shore cable ends. Yellow Insulgrip with rugged nylon housing and detachable cord grip that utilizes a unique offset jaw to provide secure strain relief.

| Order No | Mfg No | Type | List |
|----------|-----------|--------|---------|
| 114026 | HBL26CM13 | Female | \$83.60 |
| 114025 | HBL26CM11 | Male | \$41.98 |



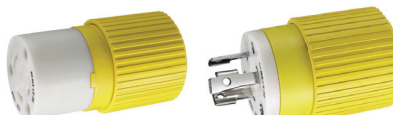
HBL60CM33

HBL60CM31

Hubbell 30 Amp Cable End Covers

Yellow Seal-Tite® covers for weatherproofing connectors. Female connector cover has a threaded sealing ring. Fits Hubbell Insulgrip devices only.

| Order No | Mfg No | Type | List |
|----------|-----------|-----------------|---------|
| 114028 | HBL60CM33 | Boot & Ring | \$31.18 |
| 114027 | HBL60CM31 | Short Boot Only | \$21.55 |



HBL303CRC

HBL305CRP

Hubbell 30 Amp/125 Volt Connectors - B-Line™

30 amp 125 volt locking body. Yellow nylon body, nickel plated contacts, triple grip nylon cord clamp, individual wire pockets for easy wire terminations.

| Order No | Mfg No | Type | List |
|----------|-----------|--------|---------|
| 114090 | HBL305CRC | Female | \$38.08 |
| 114091 | HBL305CRP | Male | \$19.88 |



Hubbell Insulgrip Plug 4 Prong Generator Cord End

Black and white nylon. Corrosion resistant, yellow nylon. Rated 30 amps; 125/250 VAC. Notes: Cord clamp range .35 "-1.15 " (9-29).

| Order No | Mfg No | List |
|----------|---------|---------|
| 121789 | HBL2711 | \$63.13 |



Marinco 30A Sealing Collar with Threaded Ring

Provides maximum moisture protection between cordset and adapter.

Use with 20A and 30A power systems.

| Order No | Mfg No | List |
|----------|--------|---------|
| 121837 | 110R | \$18.50 |



Marinco 30 Amp Inlet Interior

Replacement interior for 30 Amp 125 Volt boatside inlet.

| Order No | Mfg No | Fits | List |
|----------|---------|-----------------------------------|---------|
| 278836 | 305CRMB | 303SSEL-B, 303SSI-B, and 301 EL-B | \$38.45 |



Marinco 30A Pigtail Adapter, 30A Locking to 50A (125/250V) Locking

Female Connector: 30A 125V, Locking with Sealing Collar System, attaches to cordset or boat inlet.

Male Plug: 50A 125/250V Locking, attaches to dockside receptacle or cordset.

Note: Pigtail adapters are equipped with covers and sealing collars (where indicated) and are for use in wet locations. MARINCO'S unique sealing collar system with cover joins the adapter to the cordset with a positive, mechanical connection which provides maximum moisture protection.

| Order No | Mfg No | List |
|----------|--------|----------|
| 278822 | 121A | \$195.83 |



954-463-4307 • D.S. Hull Company, Inc. • www.dshullco.com

Electrical

SHORE POWER CABLES • ADAPTERS • Y ADAPTERS



Hubbell 30A Male to 15A Female GFCI Adapter
Permits use of 15A straight blade plug with 30A 125V Twist-Lock receptacle; with GFCI protection.

| Order No | Mfg No | List |
|----------|----------|----------|
| 114431 | HBL105GF | \$165.65 |



Hubbell 30 Amp "Y" Adapters
Y adapter to two 30 Amp 125 Volt twist lock boat connectors (female) to one 30 Amp 125 Volt dock plug (male).

| Order No | Mfg No | List |
|----------|-----------|----------|
| 114420 | HBL64CM56 | \$352.28 |



Hubbell 30 Amp Shore Power Cables

30 Amp/125 volt 50 foot yellow vinyl jacketed shore power cable set. #10AWG, completely factory pre-wired with molded-on devices. Connector end has threaded sealing ring which makes inlet/connector interface watertight.



| Order No | Mfg No | Length | Color | List |
|----------|------------|--------|--------|----------|
| 114054 | HBL61CM05 | 35' | Yellow | \$125.93 |
| 114029 | HBL61CM08 | 50' | Yellow | \$132.65 |
| 114386 | HBL61CM08W | 50' | White | \$132.65 |



HBL105

HBL104



HBL31CM29

HBL31CM28



HBL61CM22

Hubbell Adapters

| Order No | Mfg No | From | To | List |
|----------|-----------|---|---|----------|
| 114094 | HBL105 | 30 A Twist Lock Male Molded Straight Adapter | 15 A Straight Blade Female | \$76.65 |
| 114095 | HBL104 | Watertight 15 amp, 125 volt straight blade Male Plug. | 30 amp, 125 volt locking connector Female | \$85.08 |
| 114061 | HBL31CM29 | Straight Adapter 30 Amp 125 Volt Locking Male | 15 Amp 125 Volt Straight Blade Female | \$54.60 |
| 114060 | HBL31CM28 | 15 Amp Straight Blade Male | 30 Amp Twist Lock Female | \$54.60 |
| 114062 | HBL61CM22 | 15 Amp 125 Volt Straight Blade Male | 30 Amp 125 Volt Locking Female | \$111.83 |



Over 350 brand name manufacturers
Enormous, 50,000 sq. ft. warehouse located next to
Ft. Lauderdale International Airport to support all of our
customers.

Special orders are no problem.

Selection is second to none.

120 years combined marine experience within our sales
team - we can find what you need!

Exclusive Wesmar distributor.

Hours: 7:30 a.m. - 4:30 p.m. - Monday - Friday.

Our knowledgeable & friendly staff is ready to help you.

Call Debbie Senti at 954-463-4307 ext. 313

Call Jim Haun at 954-463-4307 ext. 304

Call Lou Moran at 954-463-4307 ext. 314

Call John Carracino 954-732-9570 (Cell)

Email: johnc@dshullco.com

Call Pamela Hutchisson at 954-463-4307 ext. 322

Call Bob Leatherman at 954-463-4307 ext. 305 (Wesmar)



HBL328DCP



HBL328DCR



HBL328DCC

Hubbell Electric Fishing Reel Devices

DC rated electrical system designed specifically for larger electric fishing reel systems.

The system features a corrosion resistant plug, connector body and receptacle and can be used along with a Hubbell outlet box and weatherproof cover plate to complete the installation. Rated at 28 volts DC and are applicable for all 12, 24 and 32 volt DC fishing reel systems. UL listed and CSA certified. All devices are made of high-visibility yellow nylon that is impact resistant and U.V. stabilized for longer life. Also, the contacts are nickel plated for corrosion resistance.

| Order No | Mfg No | Device | List |
|----------|-----------|------------|---------|
| 200051 | HBL328DCP | Plug | \$40.50 |
| 200052 | HBL328DCR | Receptacle | \$49.03 |
| 123360 | HBL328DCC | Connector | \$80.08 |