

## NAVIGATION LIGHTS

### PERKO NAVIGATION LIGHTS

**PERKO®**  
Made in the USA



#### Perko Fold Down Horizontal Mount Bow/Anchor Light - Reduced Glare Design

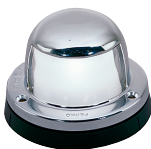
Black plastic base. 3/4" diameter anodized aluminum tube. Plastic adapters for flat or "V" type mount. Base dimensions: 2" x 2-1/2". 12-3/16" high. 12 V Bulbs included.

Order No	Mfg No	Only
340317	1281/DP0/CHR	\$67.48

#### Parts

Order No	Mfg No	Item	Only
340328	1144A00BLK	Spare Knob	\$11.13

**PERKO®**  
Made in the USA



#### Perko Horizontal Mount Masthead Light

For vessels under 12 meters (39.4 ft.). Chrome plated brass top with black plastic base. Clear lens. 12V bulb. Dimensions: 2-3/8" O.D., 7/8" high.

Order No	Mfg No	List
703170	964DPOCHR	\$68.33

**PERKO®**  
Made in the USA



#### Perko All Around Light

For use on sail or power driven vessels under 65.6'. 2 mile visibility. Frosted globe with chrome plated cast bronze base. Double contact socket, complete with 12 VDC bulb. Vertical Height - 1-5/8"; OD Base - 2-1/2".

Order No	Mfg No	List
712007	371DPOCHR	\$154.95

#### Replacement Fresnel Lens

Order No	Mfg No	List
702437	0248DPOCLR	\$15.98

**PERKO®**  
Made in the USA



#### Perko White L.E.D. All-Round Light

For use on power driven vessels under 65.6 ft. "Reduced glare" design. Fixed mount white plastic base. 3/4" diameter anodized aluminum tube. Dimensions: Height: 7-1/8"; Base size: 1" X 2-5/8". 12 V bulbs included.

Order No	Mfg No	List
340736	1345DP1WHT	\$137.75

**PERKO®**  
Made in the USA



#### Perko 3-3/4" Fixed Mount White All-Round Light

Certified for use on sail or power driven vessels under 20 meters (65.6 ft.) in length. White translucent globe and black plastic top. Fixed mount black plastic base. Base dimensions: 1" x 2-5/8". 12 Volt bulb included.

Order No	Mfg No	List
706707	0170SWBDP1	\$27.85

**PERKO®**  
Made in the USA



#### Perko 1125 Plug-In Mount Combination Masthead/White All-Round Light

Certified for use on sail or power driven vessels under 65.6 ft. in length. Black polymer and chrome plated zinc alloy top with chrome plated brass base. Waterproof cover for base that attaches to deck mounted retainer when light is in place. Base dimensions: 3-3/8" x 2-1/4". 12 volt bulb included.

Order No	Mfg No	Height	List
750242	1125DP4CHR	33-7/8"	\$160.75

**PERKO®**  
Made in the USA



#### Perko Telescoping All-Round Light

3/4" diameter anodized aluminum tube with locking collars. For use on sail or power driven vessels under 20 meters (65.6 ft.). Clear fresnel globe, black plastic top, chrome plated zinc base. Pole has 16° rake. 12 V bulbs included.

Order No	Mfg No	Length	List
703405	1311DP2CHR	24"	\$48.70
703406	1311DP3CHR	30"	\$52.50

**PERKO®**  
Made in the USA



#### Perko Combination Masthead and White All-Round Light

Reduced glare design. Black plastic top with black plastic base. Fixed mount. Base dimensions: 1" x 2-5/8". Mounting screw size: #8 (not included). 12 V bulbs included.

Order No	Mfg No	List
340305	1283DP0BLK	\$48.13

**PERKO®**  
Made in the USA



#### Perko White All-Round Light

Certified for use on power driven vessels under 20 meters in length. Fixed mount black base and top fitting with clear fresnel globe.

Order No	Mfg No	Height	List
702677	0455DP1CHR	4-1/2"	\$67.43

#### Replacement Parts

Order No	Mfg No	Description	List
702437	0248DP0CLR	Clear Fresnel Globe	\$15.98

**PERKO®**  
Made in the USA



#### Perko Universal Replacement White All-Round Light

Certified for use on sail or power driven vessels under 65.6 ft. Replaces Stow-A-Way Plug-In type All-Round lights. This series replaces older Perko model 1400 and 1600 series replacement lights. White translucent globe. Black plastic top. 3/4" diameter anodized aluminum tube with locking collar. 12 volt bulb included. Base is not included.

Order No	Mfg No	Height	List
340758	1400DP2CHR	24"	\$43.50
340769	1400DP3CHR	30"	\$45.98

#### Spare Parts

Order No	Mfg No	Description	List
702401	0201DPOWHT	White Translucent Globe	\$15.03

**PERKO®**  
Made in the USA



#### Perko Reduced Glare White All-Round Light for Tower or Arch Mounting

Black plastic top and base. Clear fluted lens and frosted globe. Vertical height: 6-3/4". 12 V bulbs included.

Order No	Mfg No	List
750142	1607DPOCHR	\$66.68

**PERKO®**  
Made in the USA



#### Perko 1639 LED Fold Down White All-Round Light

- Certified for use on sail or power driven vessels under 20 meters (65.6 ft.) in length
- Vertical mount.
- Fold-down, adjustable angle
- Reduced glare design
- Black Polymer top with clear fluted lens
- Black Polymer base
- LED: 12 VDC
- Pole: 3/4" anodized aluminum
- Vertical height: 13-3/8"
- Base dimensions: 2-3/4" x 5/8"
- Screw size: #8

Order No	Mfg No	Height	List
750668	1639DP0CHR	13-3/8"	\$107.85

**PERKO®**  
Made in the USA



#### Perko 1637 Fold Down White All-Round Light

- Certified for use on sail or power driven vessels under 20 meters (65.6 ft.) in length
- Reduced glare design
- Black polymer top and base with clear fluted lens and frosted globe.
- 12 volt bulb included.

Order No	Mfg No	Height	List
750231	1637DP0CHR	13-3/8"	\$46.10

# NAVIGATION LIGHTS

## PERKO NAVIGATION LIGHTS



### Perko Stow-A-Way Plug-In All Round Light

For use on power driven vessels under 20 meters (65.6 ft.). 2 mile visibility. Pole has 16° rake. Requires #8 screws for installation. 12 V bulbs included.

Order No	Mfg No	Base Dimensions	Material	List
703308	1209DP3CHR	3-3/8" x 2-1/4" 28-1/2" tall	Chrome plated brass top and base	\$122.75
703424	1330DP2CHR	3-3/4" x 1-5/8" 24" tall	Chrome plated zinc alloy base/black polymer top	\$79.55

### Replacement Fresnel Lens

Order No	Mfg No	List
702437	0248DPOCLR	\$15.98



### Perko Combination Masthead & White All-Round Lights

For use with sail or power driven vessels under 65.6 feet . Fold-down type, adjustable angle. 3 mile visibility.

Clear lenses, complete with 12 volt bulbs.

Black plastic and chrome plated zinc tops with chrome plated zinc mounting brackets, 3/4" anodized aluminum tubes.



Order No	Mfg No	Type	Dimensions	List
703276	1181DPOCHR	Folding	12-5/8" H; Bracket: 2" x 5/8"	\$75.50
703278	1183DPOCHR	Fixed Base	3-1/4" H; Base: 1" x 2-5/8"	\$55.10
703296	1196DP1CHR	Fixed Base	5-1/8" H; Base: 1" x 2-5/8"	\$61.78
340703	1196DP2CHR	Fixed Base	11-1/4" H; Base: 1" x 2-5/8"	\$67.18
703298	1197DPOCHR	No Base	4" H; Length tubing: 1"	\$45.73
702258	0071DPOCHR	Festoon bulb	12VDC/10 Watts (2 Pack)	\$11.55
702474	0278DP0WHT	Lens	2 Pack	\$17.80



0946DP099A



0284DPOCLR



0248DPOCLR



0278DP0WHT



0201DP0WHT



1045



1060



1059



0477



0135



0239DPOBLK



0030DP0002

### Perko Pole Light Bases & Parts

Order No	Mfg No	Description	Fits	Tube Angle	Material	Dimensions	List
740029	1045POODP	Base	#940, #970, 1400, 1460, 1612, 1631 & 1650 series	0°	C/P Brass/Plastic	Round 2-1/4" O.D.	\$33.93
340815	1060PBODP	Base	1400, 1460, 1612, 1631 & 1650 series	5°	C/P Zinc Alloy & Plastic	Rectangular 3-3/4" L X 1-5/8" W	\$38.65
703200	1059POODP	Base	1330, 1343, 1348, 1400, 1451, 1470	16°	C/P Zinc Alloy & Black Plastic	3-3/4" x 1-5/8"	\$36.98
750220	0477DP0BLK	Pole Storage Clips	3/4" diameter tubing		Soft polymer, U.V. stabilized		\$9.63
150015	0135	Base with Bulb Socket	#965, 945, 964, 972m 963		Black polymer, metal bulb holder	2-3/8" Diameter	\$35.45
340328	1144A00BLK	Knob					\$11.13
340951	0239DP0BLK	Black/Clear Lens	1451, 1470, 1460, 1465, 1656, 1461, 1452, 1456		Black polymer with clear plastic lens	2-1/2" Diameter 1-3/4" High	\$15.21
702401	0201DP0WHT	White Translucent Lens	1400, 1403, 1404, 0170, 1301, 1311, 1134, 1137, 1138		Translucent white plastic		\$15.03
702437	0248DPOCLR	Clear Fresnal Globe	1209, 1311, 1330		Clear Plastic		\$15.98
702474	02478POWHT	Clear Fresnal Lens	1201, 1181, 1184, 1125, 1123, 1124, 1183, 1197, 1196, 1178		Clear Plastic	2 per package	\$17.80
702486	0284DPOCLR	Clear Lens with Gasket	0939, 0265		Clear Lens		\$10.70
703138	0946DP099A	Clear Lens with Gasket	0946		Clear Lens		\$10.70
750219	0030DP0002	Collar Set	Fits all Perko Pole Lights w/Collars		Black Plastic	4 Collars (Assorted)	\$17.85
703415	0296DP0LNS	Red/Green Lens Set	Fits 0972, 0904 Bi-color Lights		Translucent JPlastic		\$17.80



### Perko Reduced Glare Replacement White All-Round Lights

Replacement for all All-Round lights. Certified for use on power driven vessels under 65.6 ft. in length. Fits Perko style vertical bases #1045 or #1047. Fits Perko style bases with 0° rake angle. Clear fluted lens with black plastic top. 3/4" diameter anodize aluminum tube with locking collar. Bases not included. 12V bulb included.

Order No	Mfg No	Length	List
340826	1460DP2CHR	24"	\$35.00
340837	1460DP3CHR	30"	\$37.45
340848	1460DP4CHR	36"	\$41.10
340859	1460DP5CHR	42"	\$44.90
340872	1460DP7CHR	54"	\$52.18



### Perko Delta Series Universal Replacement White All-Round Light

A reduced glare globe preserves night vision while under way. Adjustability of the globe allows for proper horizontal alignment regardless of base configuration.

Black polymer top with clear fluted lens.

3/4" diameter anodized aluminum tube.

Gold plated contacts.

Features:

Two globes - reduced glare and full output.

Two collars - threaded and locking.

Two screw positions.

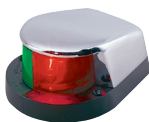
Wide 40° head.

Order No	Mfg No	Length	Only
341200	1470DP5CHR	42"	\$58.10



954-463-4307 • D.S. Hull Company Inc. • www.dshullco.com

**PERKO®**  
Made in the USA



#### Perko Bi-Color Bow Lights

- For use on power driven vessels under 12 meters (39.4 feet).
- 225° 1 mile visibility.
- 4" x 3-1/8" x 1" high. 12 V bulbs included.

Order No	Mfg No	Type	List
703404	1310DP0CHR	C/P Zinc	\$55.45

#### Spare Parts

Order No	Mfg No	Item	List
701386	0283DPALNS	Spare Lens Set	\$17.80

**PERKO®**  
Made in the USA



#### Perko 0227 Bi-Color Bow Light

- Certified for use on power driven vessels under 20 meters (65.6 ft.) in length.
- Chrome plated zinc alloy top with black polymer base.
- Red and green lenses.
- 12 volt bulbs included.
- Dimensions: 3-1/2" L x 2-1/4" W
- Screw size: #8. 12 V bulbs included.

Order No	Mfg No	Color	List
750208	0227DP0CHR	Chrome	\$48.40

#### Replacement Parts

Order No	Mfg No	Description	List
750456	0227DPOLNS	Replacement Lens	\$17.43

**PERKO®**  
Made in the USA



#### Perko L.E.D. Side Lights

- Certified for use on power driven vessels under 65.6 ft. in length.
- Low profile, vertical mount. Small size.
- Uses only 10% of the energy used by standard lights. Very little heat created. Very long life without bulb replacements.
- Water resistant.
- Made of chrome plated bronze.

Order No	Mfg No	List
340670	602/DP1/CHR	\$244.10

**PERKO®**  
Made in the USA



#### Perko Polymer Side Lights

- Certified for use on power driven vessels under 65.6 ft. in length.
- Dimensions:  
Width: 3-1/2"; Height: 2-1/4"; Vertical: 13/16".
- Requires #8 screws for installation.
- 12 VDC bulbs included.

Order No	Mfg No	Color	Mounts	List
340692	0253 W00DP1	White	Horizontal	\$76.55
340681	0253 B00DP1	Black	Horizontal	\$76.55

## NAVIGATION LIGHTS

### PERKO NAVIGATION LIGHTS

**PERKO®**  
Made in the USA



#### Perko Horizontal Mount Round Side Lights

- Certified for use on sail or power driven vessels under 12 meters (39.4 ft.) in length.
- Chrome plated brass construction. Black plastic base.
- 12 VDC bulbs included. May be used for 24 volt by replacing bulbs. old in pairs.

Order No	Mfg No	List
703169	0963DP0CHR	\$141.63

#### Spare Parts

Order No	Mfg No	Description	List
150015	0135	Base with Socket	\$35.45
340916	0281DPALNS	Lens Set Red & Green; Old style Open top	\$21.36
340927	0295DPOLNS	Lens Set Red & Green New Style Closed top	\$21.36

**PERKO®**  
Made in the USA



#### Perko Side Lights

- For use on power driven vessels under 12 meters (39.4 feet).
  - 10 Points. 112.5° 1 mile visibility. Certified with No. 71, 12 volt bulb included with lights.
  - Red and green high intensity Fresnel lenses. Brass - Perko-plate chromium plated, black plastic base.
  - 4-1/4" length, 2-3/8" width, 1-3/4" depth.
- Sold in pairs.

Order No	Mfg No	Mounts	List
703100	0915DP0CHR	Horizontal	\$176.30
703157	0955DP0CHR	Vertical	\$149.20

#### Spare Lens Sets (Red & Green)

Order No	Mfg No	Fits	List
340916	0281 DPALNS	Lens Set Red & Green; Old style Open top; 915	\$21.36
340938	0260 DPOLNS	Lens Set Red & Green; 955	\$21.36

**PERKO®**  
Made in the USA



#### Perko Vertical Surface Mount Side Lights

- Chrome plated zinc with black vinyl mounting and gasket.
- For use on power driven vessels under 12 meters (39.4 ft.).
- Complete with 12V bulb. 1 mile visibility.
- Dimensions: Length 5-1/2", Width 3-1/8", Projection 1-3/4."

Order No	Mfg No	Only
703361	1264DP0CHR	\$104.08

**PERKO®**  
Made in the USA



#### Perko Round Bi-Color Bow Light

- Horizontal mount. For use on sail or power driven vessels under 12 meters (39.4 ft.).
- 1 mile visibility.
- Chrome plated brass top with black plastic base.
- Complete with 12V bulb. O.D. 2-3/8" x 7/8" high.

Order No	Mfg No	List
731111	972DPCHR	\$67.15

#### Spare Parts

Order No	Mfg No	Description	Only
150015	0135	Base with Socket	\$35.45
340883	0297DPOLNS	Spare Lens Set New Style	\$21.36
703415	0296DPOLNS	Spare Lens Old Style	\$17.80

**PERKO®**  
Made in the USA



#### Perko Polymer Side Lights

- Certified for use on power driven vessels under 65.6 ft. in length.
- Dimensions: Length: 3-1/2"; Width: 2-1/4";
- Projection overall: 7/8".
- Requires #8 screws for installation.
- 12 VDC bulbs included.

Order No	Mfg No	Color Body	Mounts	List
340669	0254W W00DP1	White	Vertical	\$77.33
340658	254 B00DP1	Black	Vertical	\$77.33

#### Spare Parts

Order No	Mfg No	Item	List
340894	0277DPRLNS	Red Lens	\$21.36
340905	0277DPGLNS	Green Lens	\$21.36

**WHITECAP®**



#### Whitecap Stainless Steel Flush Mount Side Lights

- Stainless steel 112-1/2" port and starboard running lights. One red (port), one green (starboard) lens. Sold in pairs.
- Dimensions: 9-7/8" L x 2-1/4" W x 2-1/2" D.
- Voltage: 12 V, 3W.

Order No	Mfg No	List
240119	S-918	\$60.45

#### Spare Lens Set

Order No	Mfg No	List
240120	S-918L	\$13.23



# NAVIGATION LIGHTS

## PERKO NAVIGATION LIGHTS • WHITECAP NAVIGATION LIGHTS



### Perko Navigation Lights for Vessels Under 20 Meters (65.6 ft.)

- For use on sail or power driven vessels under 65.6' in length.
- Black plastic housing 5-1/4" x 4-1/4".
- For 12, 24 or 32 VDC systems. Bulbs not included.

#### Side Lights – No. 109

112-1/2° Visibility arc. Visible 2 miles.

Order No	Mfg No	Color	List
340566	0109R00BLK	Red	\$123.38
340573	0109G00BLK	Green	\$123.38

#### White Masthead Light – No. 110

225° Visibility arc. Visible 2 miles.

Order No	Mfg No	List
340582	0110000BLK	\$123.38

#### White All-Around Light – No. 108

Order No	Mfg No	List
340747	108000BLK	\$111.73

#### Stern Light – No. 111

Order No	Mfg No	List
340591	0111000/BLK	\$123.38

#### Order Bulbs Separately

Order No	Mfg No	Voltage	List
701426	0070DP1CLR	12 VDC	\$14.60
340603	0067DP2CLR	24 VDC	\$17.95
703532	0070DP2CLR	32 VDC	\$15.68



### Perko Navigation Lights for Vessels Over 20 Meters (65.6 ft.)

Certified for use on vessels 20 meters (65.6 ft.) to 50 meters (164.0 ft.) in length. Construction: Black plastic. Pre-wired double contact socket and 3 feet of 16/3-SO cable. Will accept bulbs for 12, 24, 32 or 120 volts. Bulb not included. Watertight access cap for rebulbing and cleaning.

Dimensions: Height: 7-1/2"; Lens height: 4-1/2"; Screw size: 1/4"; Bulb data: Perko #374.

Order No	Mfg No	Type Light	List
341213	1127RA0BLK	Red Side	\$266.28
341221	1127GA0BLK	Green Side	\$266.28
341232	1128A00BLK	225° Mast Head	\$266.28
341243	1129A00BLK	135° Stern	\$266.28
341254	1130A00BLK	360° All-Round	\$266.28



#### Perko Round Transom Stern Light

- For use on power driven vessels under 20 meters (65.6 feet).
- Chrome plated brass. 12 Points, 135° clear, 2 mile visibility.
- Certified for 12 VDC with No. 211-2, 12 VDC 12 CP bulb supplied. Black plastic base and stainless steel screws for mounting. 3" dia., 1-3/4" depth.

Order No	Mfg No	List
703137	0946DP112V	\$76.95



#### Perko Rectangular Transom Stern Light

- For use on power driven vessels under 20 meters (65.6 feet).
- Brass, polished chromium plated, 12 Points, 135°, clear, 2 mile visibility.
- Certified for 12 VDC with No. 70-0, 12 volt bulb supplied.
- New molded black plastic mounting flange which permits easy installation by drilling a 2-1/8" hole.
- Dimensions overall 5-3/16" x 3-3/8", 1-1/2" depth.

Order No	Mfg No	List
703122	0939DP112V	\$138.30



#### Perko Chromalex Transom Stern Lights

- For use on power driven vessels under 20 meters (65.6 feet).
- Chrome plated brass tops with black plastic base, 12 Points, 135°, clear lens, 2 mile visibility.
- Certified with No. 71, 12 VDC bulb supplied.
- 2-3/8" base diameter. Vertical height: Mod. 945 - 7/8"; Mod. 965 - 3/4". 12 VDC.

Order No	Mfg No	Mounts	List
703171	0965DP0CHR	Horizontal	\$68.33

#### Spare Lens

Order No	Mfg No	Description	List
340949	0295DP0WHT	Spare Lens 0965 (New Style Closed Top)	\$10.47
150015	0135	Base with Socket	\$35.45



#### TH Marine Shark Eye Navigation Lights

Meets ABYC A-16 & USCG 1 NM NMMA Type Accepted Stainless Steel Base Tinned Copper Wire Sold in pairs.

Order No	Mfg No	List
303064	SEL-1-DP	\$54.70



#### Whitecap Stainless Steel White Bow Light

225° bow white light with a clear lens and stainless steel base. Dimensions: 1-3/8" high x 2-1/4" diameter.

Order No	Mfg No	List
240117	S-115C	\$19.55



#### Whitecap Stainless Steel Masthead Light

360° all around white light with a clear lens and stainless steel base.

Dimensions: 1-3/8" high x 2-1/4" diameter.

Order No	Mfg No	List
240115	S-110C	\$17.78



#### Whitecap Stainless Steel Combination Bow Light

225° (20 points) bow light with both red and green lens and a stainless steel base.

12 VDC, 3 watts.

Dimensions: 1-3/8" high x 2-1/4" diameter.

Order No	Mfg No	List
240116	S-111C	\$23.18



#### Whitecap Stainless Steel Top Mount Stern Light

Stainless steel 135° (12 points) stern light with a clear lens.

Dimensions: 1-3/8" high x 2-1/4" diameter.

Voltage: 12 V, 3W.

Order No	Mfg No	List
240112	S-108C	\$17.18



#### Whitecap Stainless Steel Rectangular Transom Light

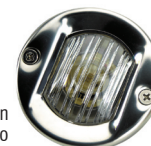
135° stern light with a 304 stainless steel base.

This light can also be used for a cockpit courtesy light.

5-3/16" x 3-1/8". Requires (2) #10 fasteners for installation.

Voltage: 12 V, 10 W.

Order No	Mfg No	List
240121	S-955P	\$27.93



#### Whitecap Stainless Steel Round Transom Light

135° stern light. Waterproof construction with two gaskets. One seals the light to the hull, the other seals in the lens. Stainless steel base.

Order No	Mfg No	List
240118	S-704C	\$24.90



954-463-4307 • D.S. Hull Company, Inc. • www.dshullco.com

# NAVIGATION LIGHTS

## WHITECAP • HELLA • AQUA SIGNAL NAVIGATION LIGHTS

**Hella marine**  
Vision and Innovation



### Hella Navigation Lights Series 2984

Internationally approved navigation lamps. Non-magnetic and saltwater resistant.

Vertically hanging bulb and contacts to prevent corrosion.

Dimensions: 4.25" H x 4.21" W x 3.54" deep.

12 VDC 25 watt long life bulb included.

Approvals: IMO COLREG, BSH, USCG, ABYC A-16, RINA(I).

1 year manufacturer's warranty.

#### Masthead Light

White lamp. 225° arc. Visible 3 nautical miles.

Order No	Mfg No	Housing Color	List
231100	002984305	Black	\$72.50
231101	002984355	White	\$72.50

#### Stern Light

White lamp. 135° arc. Visible 2 nautical miles.

Order No	Mfg No	Housing Color	List
231102	002984325	Black	\$72.50
231103	002984375	White	\$72.50

#### Starboard Light

Green lamp. 112° arc. Visible 2 nautical miles.

Order No	Mfg No	Housing Color	List
231104	002984345	Black	\$72.50
231105	002984395	White	\$72.50

#### Port Light

Red lamp. 112° arc. Visible 2 nautical miles.

Order No	Mfg No	Housing Color	List
231106	002984335	Black	\$72.50
231107	002984385	White	\$72.50

**Hella marine**  
Vision and Innovation



### Hella Navigation Lights Series 3562

Compact and proven navigation lamps for yachts and powerboats. Saltwater resistant and non-magnetic, 3562 series lamps feature a 'snap lock' housing allowing bulbs to be changed without tools.

Dimensions: 3" high x 2-1/2" wide x 2-1/16" deep.

Approvals: IMO COLREG, USCG, ABYC A-16, RINA(I).

#### Masthead Light

White lamp. 225° arc. Visible 2 nautical miles.

Order No	Mfg No	Housing Color	List
231110	003562005	Black	\$25.00
231111	003562105	White	\$25.00

#### Stern Light

Order No	Mfg No	Housing Color	List
231112	003562015	Black	\$25.00
231113	003562115	White	\$25.00

#### Starboard Light

Order No	Mfg No	Housing Color	List
231114	003562025	Black	\$25.00
231115	003562125	White	\$25.00

#### Port Light

Order No	Mfg No	Housing Color	List
231116	003562035	Black	\$25.00
231117	003562135	White	\$25.00

**Hella marine**  
Vision and Innovation

### Hella Surface Mount All Round/Anchor Light

- Visible 2 NM. All Round White / Anchor Lamps are saltwater proof, non-magnetic and internationally approved.
- Dimensions: 2.36" Diam. X 2.67" H.
- Approvals: IMO COLREG, USCG, ABYC A-16, RINA(I)
- 1 year manufacturers limited warranty. 12V / 10W BA15s included.



**aqua signal**



33203-7

33303-7

### Aqua Signal Series 33 L.E.D. Navigation Lights

L.E.D. for long life, 12 VDC. For vessels < 65'.

Completely sealed and waterproof. Low power draw. Visibility: 2 nm.

Rigid white polycarbonate housing, shock resistant, non-corrosive, non-magnetic, seawater resistant. Innovative lens technology is UV and saltwater resistant requiring only a single LED per light. Pre-wired for 2-hole mounting.

Order No	Mfg No	Type	List
393415	33203-7	Green Starboard	\$58.95
393426	33303-7	Red Port	\$58.95



### TH Marine Light Clips

Extruded PVC light clips provide a great way to secure and store navigation lights. Clips offer a permanent location to hold your lights to prevent damage to lights or boats, to prevent loss of the lights, and to prevent noise. Fits all standard navigation light poles. 2 per pack.

Order No	Mfg No	List
303053	ULC-2-DP	\$7.80

**aqua signal**



900002-7, 90003-7,  
90005-7, 90006-7,  
90285-1, 90400307,  
90173-1



90049-7



90171-1



90384-7



90177-7,  
90201-7



90470-7



90496-7



90200-7

### Aqua Signal Replacement Bulbs.

Order No	Mfg No	Voltage	Watts	Type	Fits	Pack	List
393277	90177-7	12 VDC	10 W	Festoon 1-11/16" L x 7/16" D	Series 15	2	\$10.95
393404	90496-7	12 VDC	5 W	1" L x 3/8" D	Series 20	2	\$13.95
393299	90201-7	24 VDC	10 W	Festoon 1-7/8" L x 7/16" D	25 Series	2	\$18.95
393200	90005-7	12 VDC	10 W	D.C. Bayonet Base	Series 40/42/50/55	1	\$26.95
393178	90002-7	12 VDC	25 W	D.C. Bayonet Base	Series 40/41/50/55	1	\$26.95
393209	90006-7	24 VDC	10 W	D.C. Bayonet Base	Series 40/41/50/55	1	\$26.95
393189	90003-7	24 VDC	24 W	D.C. Bayonet Base	Series 40/41/50/55	1	\$26.95
393376	90470-7	12 VDC	20 W	Bayonet Base 1-3/16" L x 3/8" D	BA9 Halogen Series 80 Deck Downlight	1	\$19.95
730167	90200-7	12 VDC	10 W	Special Festoon Bulb (Old style) 1-7/8" x 7/16"	Series 25	2	\$14.95

# NAVIGATION LIGHTS

## AQUA SIGNAL NAVIGATION LIGHTS



### Aqua Signal Series 20 Navigation Lights

Designed for powerboats.

Rigid polycarbonate housing, shock resistant, non-corrosive, non-magnetic, seawater resistant. Poles (where applicable) constructed of durable fiberglass.

Order No	Mfg No	Type	Housing Color	Mounting	Boat Size	List
392111	20202-7	Starboard Green	Black	Side Mount	< 39'	\$32.95
392122	20203-1	Starboard Green	White	Side Mount	< 39'	\$34.95
392144	20302-7	Port Red	Black	Side Mount	< 39'	\$32.95
392155	20303-1	Port Red	White	Side Mount	< 39'	\$34.95
392232	20503-1	Stern	White	Side Mount	< 39'	\$32.95
392221	20502-7	Stern	Black	Side Mount	< 39'	\$34.95
392078	20112-7	Bi-Color	Black	12" Pedestal	< 39'	\$83.95
392133	20240-7	All-Round	Black	24" Slide-in Mount	< 39'	\$82.95
392034	20040-7	All-Round	Black	4" Pedestal	< 39'	\$31.95
392101	20181-1	All-Round	White	18" Fold Down	< 39'	\$147.95

### Replacement Parts

Order No	Mfg No	Item	List
392188	20430-1	White All-Round Lens	\$34.95
392254	20700-7	Black Plug-In Base	\$23.95
393404	90496-7	12V 5W Bulb	\$13.95



### Aqua Signal Series 40 Navigation Lights

Traditional navigation lights.

Shock resistant, non-corrosive, non-magnetic, seawater resistant polycarbonate housing.

Rigid acrylic fresnel lens.

12 VDC.



Order No	Mfg No	Boat Size	Type	Housing Color	Mounting	List
392606	40100-7	< 65'	Bi-Color	Black	Side Mount	\$130.95
392628	40200-7	< 65'	Starboard Green Side	Black	Side Mount	\$132.95
392639	40300-7	< 65'	Port Red Side	Black	Side Mount	\$132.95



### Replacement Parts

Masthead top; all-round light bottom lens only for 40 Series Combination Mast/Anchor Light.

Order No	Mfg No	Item	List
392870	42410-1	Clear Lens	\$98.95



### Aqua Signal Series 25 Navigation Lights

Navigation Lights with Stainless Steel Components. Designed for both powerboat and sailboat applications. This classic design is the industry standard for boats under 12M. Application depending on visibilities.

12 VDC.

Order No	Mfg No	Boat Size	Type	Housing Color	Mounting	List
392364	25200-7	< 39'	Green Starboard Side	Black	Side Mount	\$32.95
392386	25300-7	< 39'	Red Port Side	Black	Side Mount	\$32.95
392342	25100-7	< 39'	Bi-Color	Black	Side Mount	\$32.95
392408	25400-7	< 39'	White Masthead	Black	Side Mount	\$32.95
392441	25500-7	< 39'	Stern	Black	Side Mount	\$32.95
392419	25404-7	< 39'	White Masthead/Foredeck Combination	Black	Mast Only	\$91.95
392287	25000-7	< 39'	White All-Round	Black	Deck Mount	\$27.95
392320	25004-7	< 39'	Red All-Round	Black	Deck Mount	\$29.95

### Replacement Parts

Order No	Mfg No	Item	List
392353	25110-1	Bi-Color Lens	\$25.95
392474	25902-1	Deck Mount Bracket	\$21.95
730167	90200-7	12 V 10 W Bulb	\$13.95



### Aqua Signal Series 41 Navigation Lights

Navigation lights designed for direct mounting.

Rigid, shock resistant, non-corrosive, non-magnetic, seawater resistant polycarbonate.

Easy to change acrylic fresnel lens.

Order No	Mfg No	Boat Size	Type	Voltage	Mounting	List
392771	41100-7	< 50m	Bi-Color	12 VDC	Side Mount	\$88.95
392782	41200-7	< 65'	Starboard Green Side	12 VDC	Side Mount	\$88.95
392793	41300-7	< 65'	Port Red Side	12 VDC	Side Mount	\$88.95
392815	41500-7	< 65'	White Stern	12 VDC	Side Mount	\$88.95
392804	41404-1	< 65'	White Mast/Foredeck Combo	12 VDC	Side Mount	\$304.95

### Replacement Parts and Accessories

Order No	Mfg No	Type	List
392859	41903-1	Deck Mount Bracket	\$22.91



### Aqua Signal Series 34 LED Navigation Lights

Stylish family of slim-design, maintenance-free LED navigation lights.

High quality, impact and shock resistant polycarbonate.

12/24 VDC.

Order No	Mfg No	Boat Size	Type	List
393437	34203-7	< 50m	Starboard Green Side	\$87.95
393448	34303-7	< 50m	Port Red Side	\$87.95
393459	34503-7	< 50m	White Stern Light	\$87.95



954-463-4307 • D.S. Hull Company, Inc. • www.dshullco.com





#### Attwood Bi-Color Deck Mount Combination Light

Chrome plated die-cast ZAMAK. One-mile, 225° visibility for power boats up to 12 meters (39.4 ft.). Mounts on decks or gunwales with external screws. Includes 7.5 watt lamp and 7" hard wire leads for 12VDC electrical connection. Housing completely encases socket. Installs with two #8 screws.

Order No	Mfg No	List
245012	6375D6	\$32.25



#### Attwood Stainless Steel Combination Side Light

One-mile visibility sidelights for powerboats under 12 meters (39.4'). NMMA "As Approved Only" No. 091145. Meets ABYC Standard A-16. Stainless steel construction for corrosion resistance. Compact, easy to install. Gasket between lens and base makes these lights virtually watertight. Noncorrosive nylon socket eliminates corrosion between bulb and socket. 12 VDC 6 cp lamp (#90) included. Stainless steel fasteners included. Installation hole size: 3/4". Dimensions: 2-9/16" long x 2-1/4" wide x 1-1/2" high. One per pack.

Order No	Mfg No	List
244429	66318-7	\$44.58



#### Attwood Vertical Flush Mount Transom Light

304 stainless steel with a plastic body and watertight lamp socket. The round transom light body is translucent so it shines on both sides of a bulkhead! It can be used to light an interior compartment and may also be used as a cockpit courtesy light. Rubber gasket seals lens and body to mounting surface. Includes one 7.5-watt lamp and two stainless steel #10 screws. Patented design. Light provides 2-mile, 135° transom visibility for pleasure craft up to 164 ft. (50 meters) in length.

Order No	Mfg No	List
245006	6356D7	\$27.03



Over 350 brand name manufacturers  
Enormous, 50,000 sq. ft. warehouse located next to Ft. Lauderdale International Airport to support all of our customers.  
Special orders are no problem.  
Selection second to none.  
120 years combined marine experience within our sales team - we can find what you need!  
Exclusive Wesmar distributor.  
Hours: 7:30 a.m. - 4:30 p.m. - Monday - Friday.  
Our knowledgeable & friendly staff is ready to help you.

## NAVIGATION LIGHTS

### ATTWOOD NAVIGATION LIGHTS



#### Attwood Pole Lights

##### Stowaway with Plug in Base

For use on power driven vessels under 65.6 ft. in length. Globe-style all-round light with plug-in base. Swivel cover on base protects the base socket when light is stowed away. Base extends just 3" below deck. 4" long x 1-5/8" wide x 1-3/8" diameter. Includes ZAMAK base and one 12-watt lamp. Has three countersunk holes for #10 fasteners.

Order No	Mfg No	Height	List
108241	7100A7	24"	\$52.58
244456	7100C7	36"	\$67.40



#### Replacement Globe

Order No	Mfg No	List
244431	91017B7	\$8.28



#### Attwood Stowaway Pole Light Base

Chrome plated ZAMAK. Has three countersunk holes for #10 screws. Dimensions: 4" long x 1-5/8" wide x 3" deep below deck. For use with #5110-48-7 light.

Order No	Mfg No	List
244438	911339-7	\$30.90



#### Attwood 3500 Series 2-Mile LED Sidelights

For use on boats up to 65.6ft (20m) in length. Consumes only 2.4 watts at 12VDC. Designed to resist corrosion in saltwater environments. Lights are completely sealed and watertight. LED technology keeps lights cool to the touch. Rated for 50,000+ hours of use. Built-in "Tell Tale" indicators. 10 Year Warranty. Provides 112.5° visibility.

Order No	Mfg No	Color	List
740038	NV2012SSG-7	Green	\$70.93
740039	NV2012SSR-7	Red	\$70.93
740040	NV2002SS-7	Bi-Color	\$79.53



#### Attwood Fixed Base All-Round Light

Two-mile, 360° light visibility for use on boats up to 39.4 ft. Fixed base for use on pontoons, hard tops and radar arches. Base dimensions: 2-1/2" long x 1" wide. Installs with two #10 fasteners. (Not included) White plastic globe-style lens.

Order No	Mfg No	List
244434	5122-08-7	\$32.10

#### Replacement Lens

Order No	Mfg No	List
244431	91017B7	\$8.28



#### Attwood International Masthead Lights Vertical/Horizontal Mount

Three-mile running light and three mile anchor light for boats up to 65.6' in length. Meets international (72 COLREGS requirements and ABYC A-16 Standards.) Both fold-down vertical or horizontal mounts included. Base allows the light to swing 205° and can be locked at any point within arc. 20" long. Chrome plated ZAMAK components. Anodized aluminum pole. Two 12 VDC 10 Watt festoon bulbs included. Base dimensions: 2-9/16" long x 13/16" wide. Predrilled with two holes for #10 screws. (Not included)

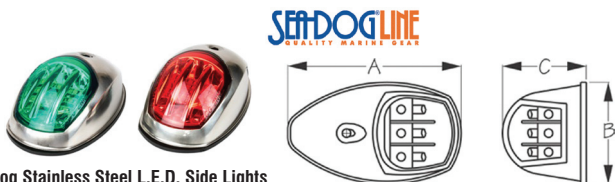
Order No	Mfg No	List
244436	7202-P-7	\$91.65



Over 350 brand name manufacturers  
Enormous, 50,000 sq. ft. warehouse located next to Ft. Lauderdale International Airport to support all of our customers.  
Special orders are no problem.  
Selection second to none.  
120 years combined marine experience within our sales team - we can find what you need!  
Exclusive Wesmar distributor.  
Hours: 7:30 a.m. - 4:30 p.m. - Monday - Friday.  
Our knowledgeable & friendly staff is ready to help you.  
Call Debbie Senti at 954-463-4307 ext. 313  
Call Jim Haun at 954-463-4307 ext. 304  
Call Lou Moran at 954-463-4307 ext. 314  
Call John Carracino 954-732-9570 (Cell)  
Email: johnc@dshullco.com  
Call Pamela Hutchisson at 954-463-4307 ext. 322  
Call Bob Leatherman at 954-463-4307 ext. 305 (Wesmar)

# NAVIGATION LIGHTS

## SEA DOG NAVIGATION LIGHTS



**Sea Dog Stainless Steel L.E.D. Side Lights**

Stamped 304 stainless. Approved for USCG 2 NM (Colreg 2 mile). One pair includes port and starboard lights.

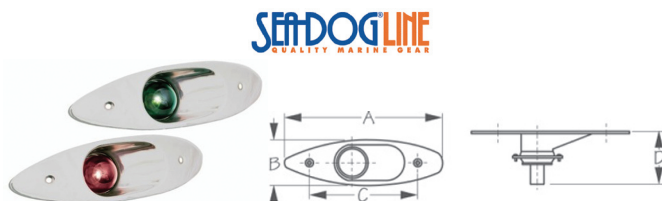
Order No	Mfg No	A	B	C	Finish	List
354552	400071	3-7/8"	2-1/4"	1-7/8"	Stainless	\$62.75
354563	400073-1	3-7/8"	2-1/4"	1-7/8"	Black	\$62.75



**Sea Dog Stainless Steel L.E.D. Side Mount Side Lights**

LED Navigation Lights are approved for USCG 2 NM (Colreg 2 mile). One pair includes Port and Starboard lights.

Order No	Mfg No	A	B	C	List
351841	400070-1	3-7/8"	2-1/4"	1-7/8"	\$73.50



**Sea Dog Stainless Steel L.E.D. Flush Mount Side Lights**

One pair includes Port and Starboard lights. Direct replacement for the 400180. LED Flush Mount Side Lights are approved for USCG 1 NM (Colreg 1 mile). 12 volt. Requires #8 screws for installation.

Order No	Mfg No	A	B	C	D	List
351852	400080-1	7-3/4"	2-5/16"	5-5/16"	2-11/16"	\$101.95



**Sea Dog L.E.D. Transom Lights**

LED Transom Lights are approved for USCG 2 NM (Colreg 2 mile). 12 volt.

Order No	Mfg No	Type	A	B	C	D	E	List
351817	400065-1	Rectangular	4-3/4"	1-3/8"	5/16"	3"	2-3/4"	\$61.95
351828	400060-1	Round	3-3/16"	1-3/8"	5/16"	2-1/2"	-	\$55.95



**Sea Dog Stainless Steel L.E.D. Side Lights**

Stamped 304 stainless. LED Navigation Lights 400069 are approved for USCG 2 NM (Colreg 2 mile). One pair includes Port and Starboard lights.

Order No	Mfg No	A	B	C	Fastener	List
352452	400069-1	2-9/16"	2-1/4"	1"	#8 FH	\$121.95



**Sea Dog L.E.D. Telescopic All-Round Light**

Injection molded nylon/chrome plated zinc. LED telescopic all around lights are approved for USCG 2NM (Colreg 2 mile). 12 Volt DC.

Order No	Mfg No	A	B	C	D	Fastener	List
352428	400016-1	48"	24"	1-5/16"	1-3/16"	#8 FH	\$84.35



**Sea Dog L.E.D. Removable All-Round Light**

Injection molded nylon/chrome plated zinc. LED removable all around lights are approved for USCG 2NM (Colreg 2 mile). 12 Volt DC.

Order No	Mfg No	A	B	C	D	Fastener	List
352417	400015-1	24-5/8"	18-1/2"	5/8"	2-7/8"	#8 FH	\$68.95



**Sea Dog L.E.D. Fixed Mount All-Round Light**

Injection molded nylon/chrome plated zinc. LED fixed mount all around lights are approved for USCG 2NM (Colreg 2 mile). 12 Volt DC.

Order No	Mfg No	A	B	C	Fastener	List
352372	400010-1	4"	2-3/8"	2-15/16"	#8 FH	\$52.95
352383	400011-1	7-1/2"	2-3/8"	2-15/16"	#8 FH	\$53.75



**Sea Dog Stainless Steel L.E.D. Combination Bow Light**

Stamped 304 stainless/nylon. LED Navigation Lights are approved for USCG 2 NM (Colreg 2 mile).

Order No	Mfg No	A	B	C	Fastener	List
352441	400059-1	2-9/16"	2-1/4"	1"	#8 FH	\$83.95



**Sea Dog L.E.D. Fold Down All-Round Light**

360° all around light approved for USCG 2NM. Injection molded nylon and aluminum. 12 VDC, low amp draw. Installs with (2) #8 FH fasteners (not included).

Order No	Mfg No	A	B	C	Fastener	List
352394	400012-1	9"	1-7/8"	2-1/2"	#8 FH	\$56.95
352406	400013-1	24"	1-7/8"	2-1/2"	#8 FH	\$63.95

Like Us On  
facebook

954-463-4307 • **D.S. Hull Company, Inc.** • www.dshullco.com